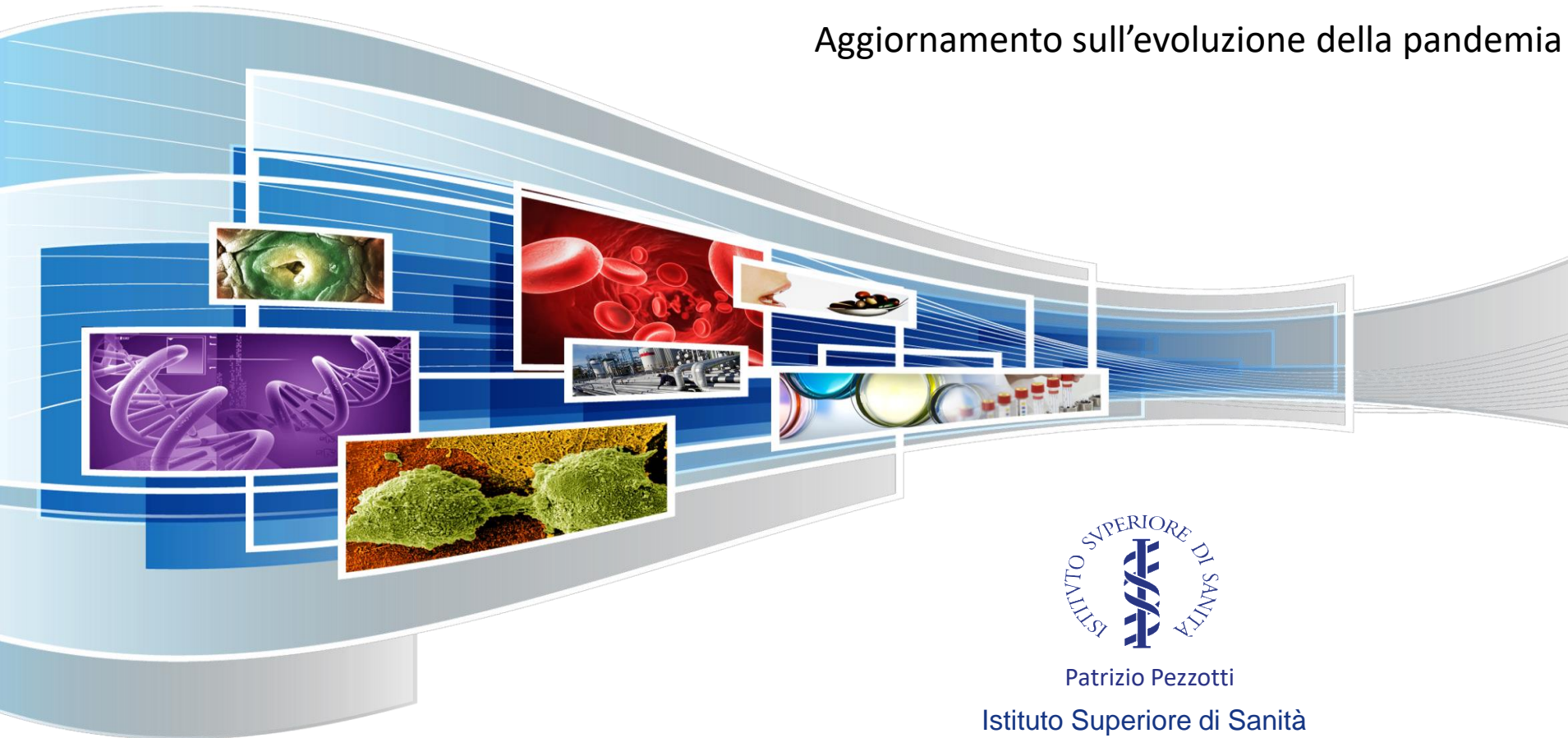


COVID-19

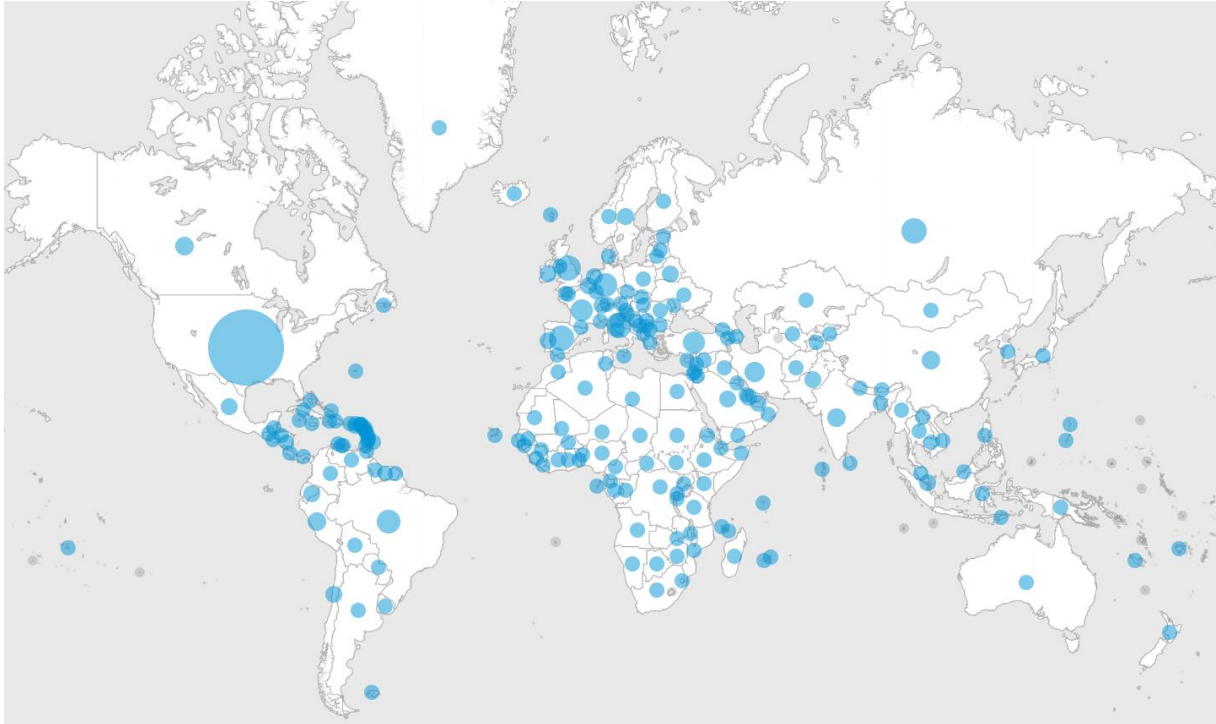
Aggiornamento sull'evoluzione della pandemia



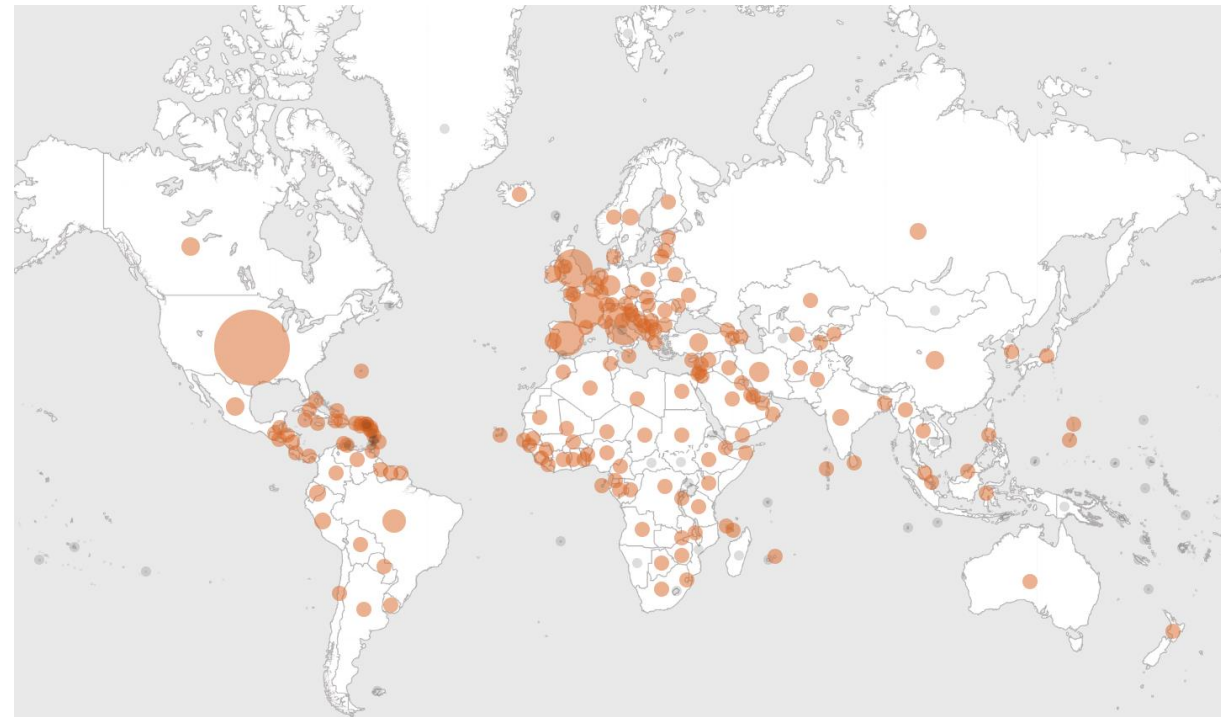
Patrizio Pezzotti
Istituto Superiore di Sanità

COVID-19 – Situazione Globale

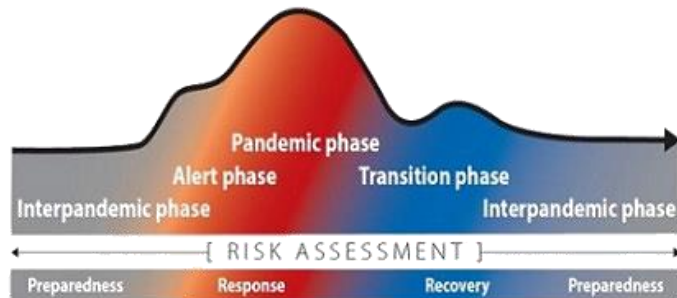
Numero di casi



Decessi



Pandemia dichiarata l'11 marzo 2020



COVID-19 – Situazione Globale

Case Comparison

WHO Regions

Americas



1,781,564
confirmed cases

Europe



1,755,790
confirmed cases

Eastern Mediterranean



281,744
confirmed cases

Western Pacific



163,201
confirmed cases

South-East Asia

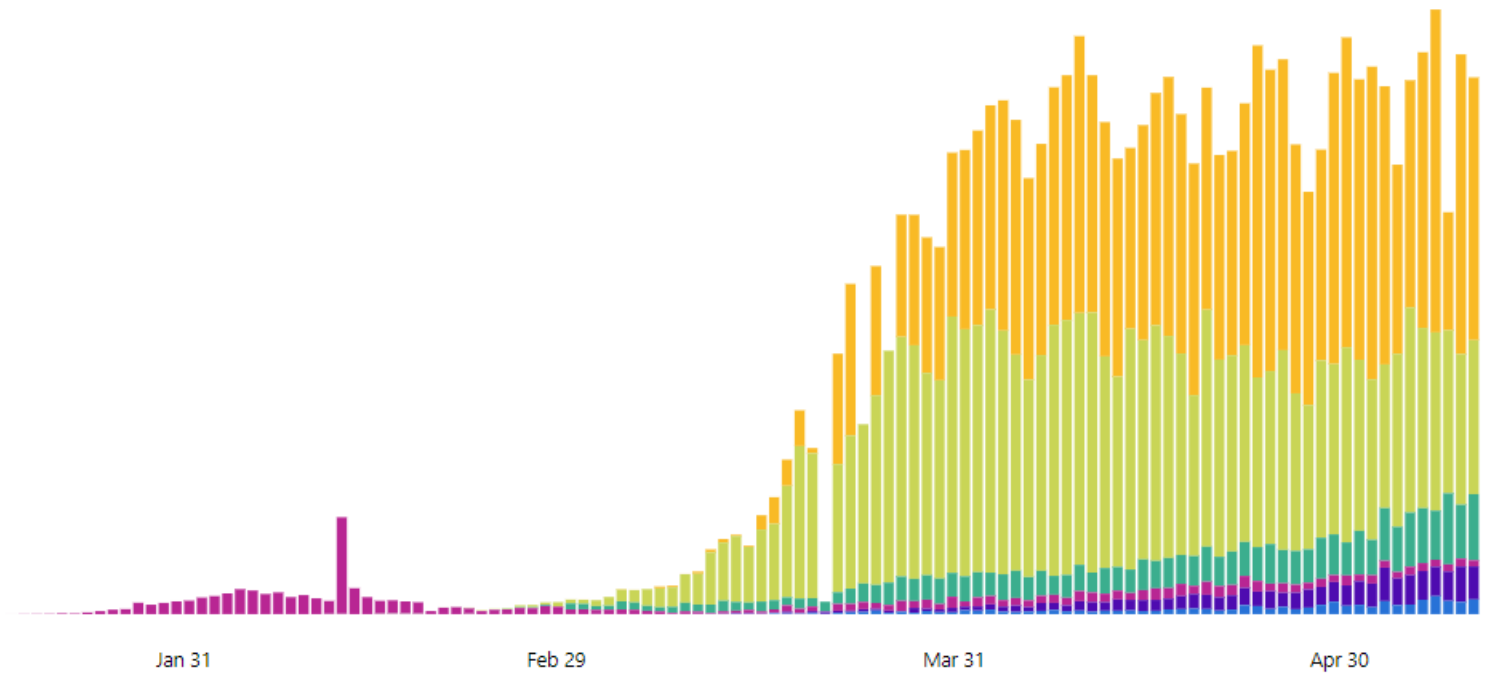


107,354
confirmed cases

Africa



49,429
confirmed cases



Source: World Health Organization

<https://covid19.who.int/>



COVID-19 data reported by countries and territories in the Region of the Americas

From January to 12 May 2020 2:00 PM EST

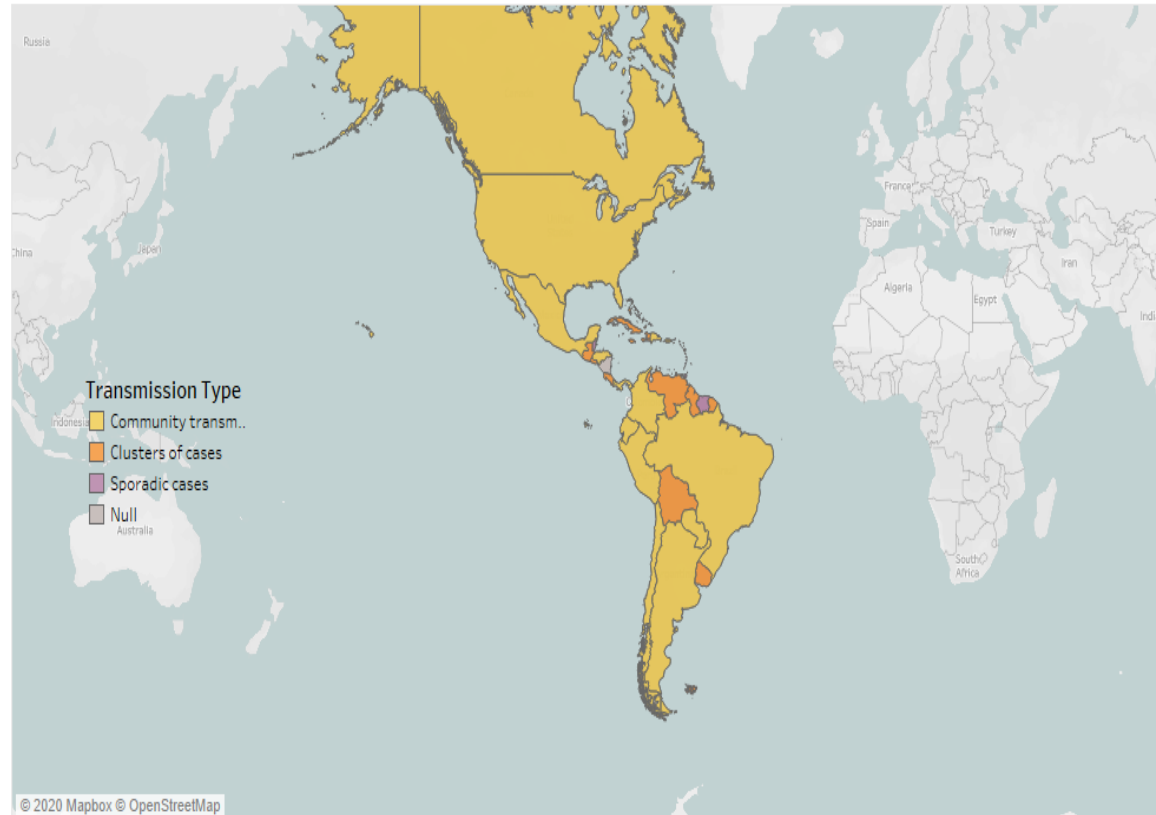
Region of the Americas

Subregion Cases and Deaths

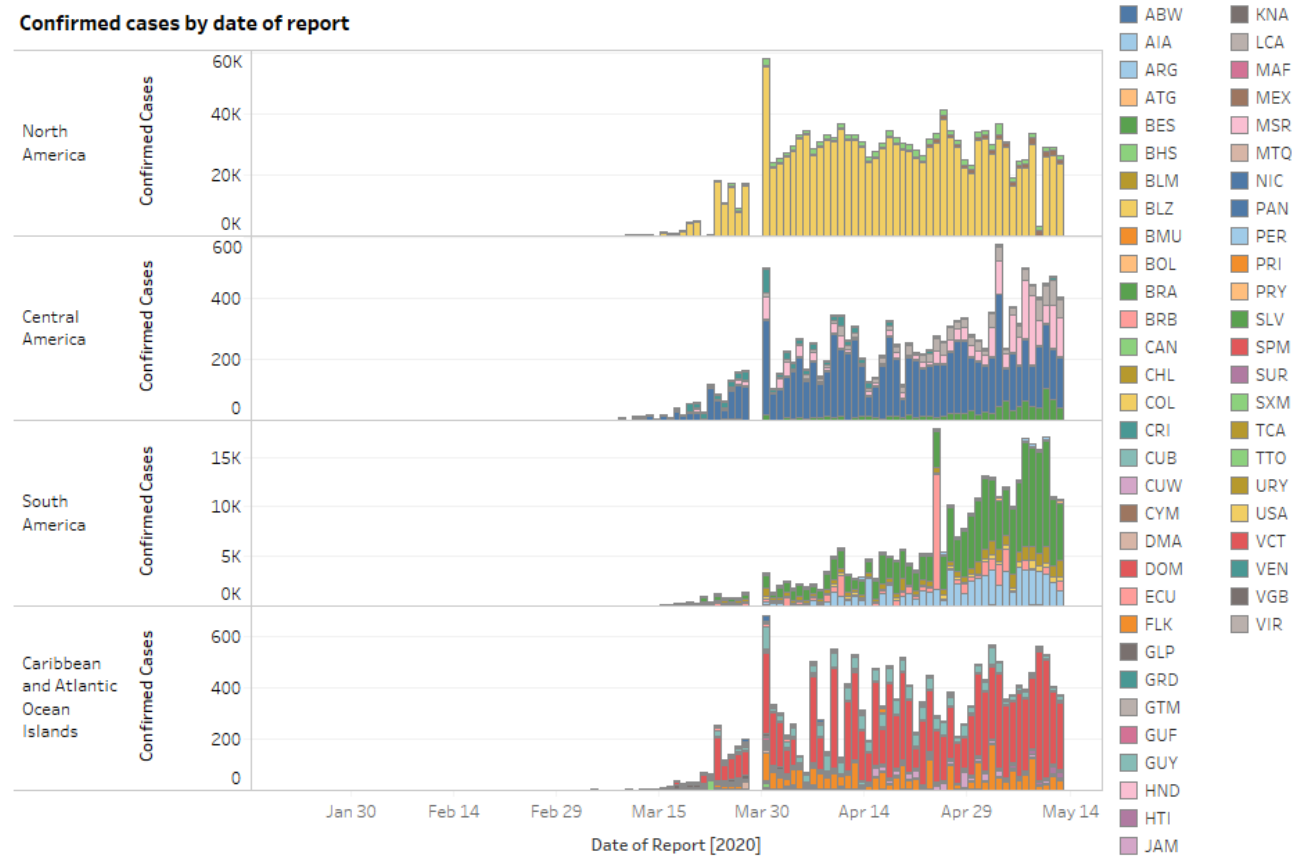
Country Epidemiological Information



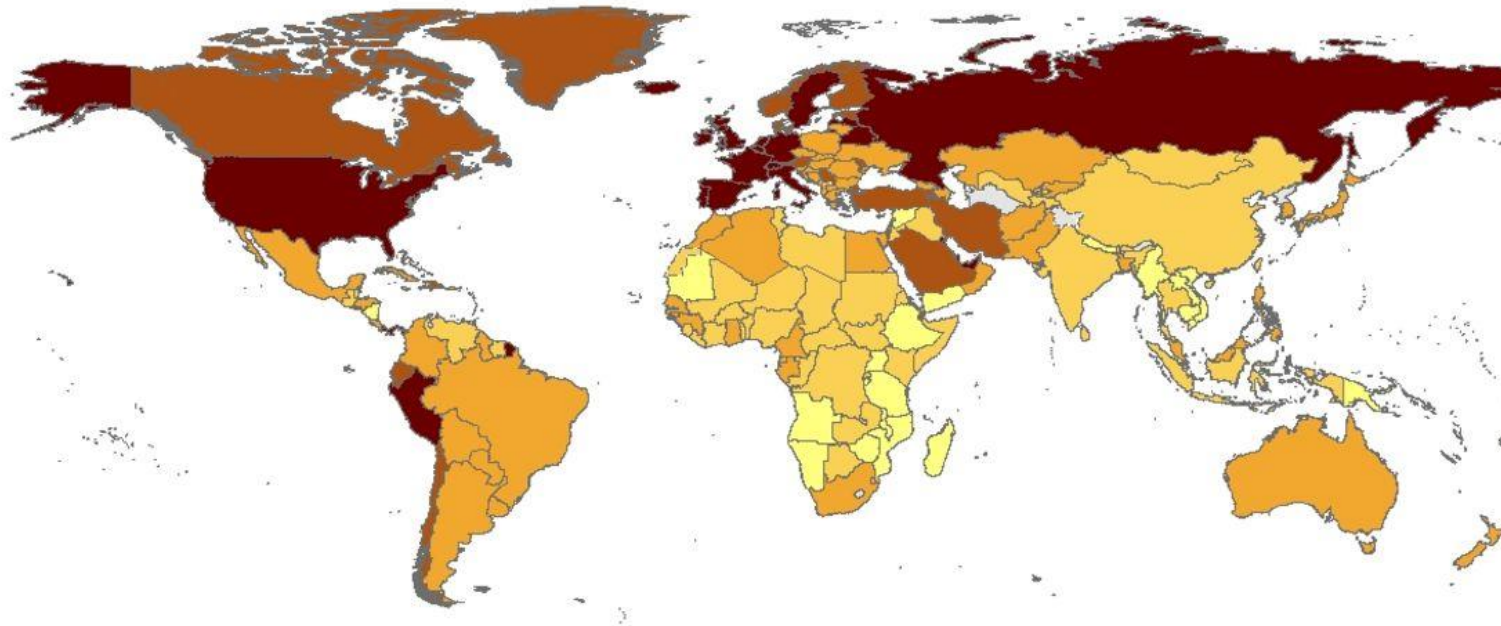
Transmission in countries and territories in the Americas



Confirmed cases by date of report



COVID-19 – Situazione Globale



**Cumulative number of reported
COVID-19 cases per 100 000**

< 1.0

1.0 - 9.9

10.0 - 99.9

100.0 - 199.9

≥ 200.0

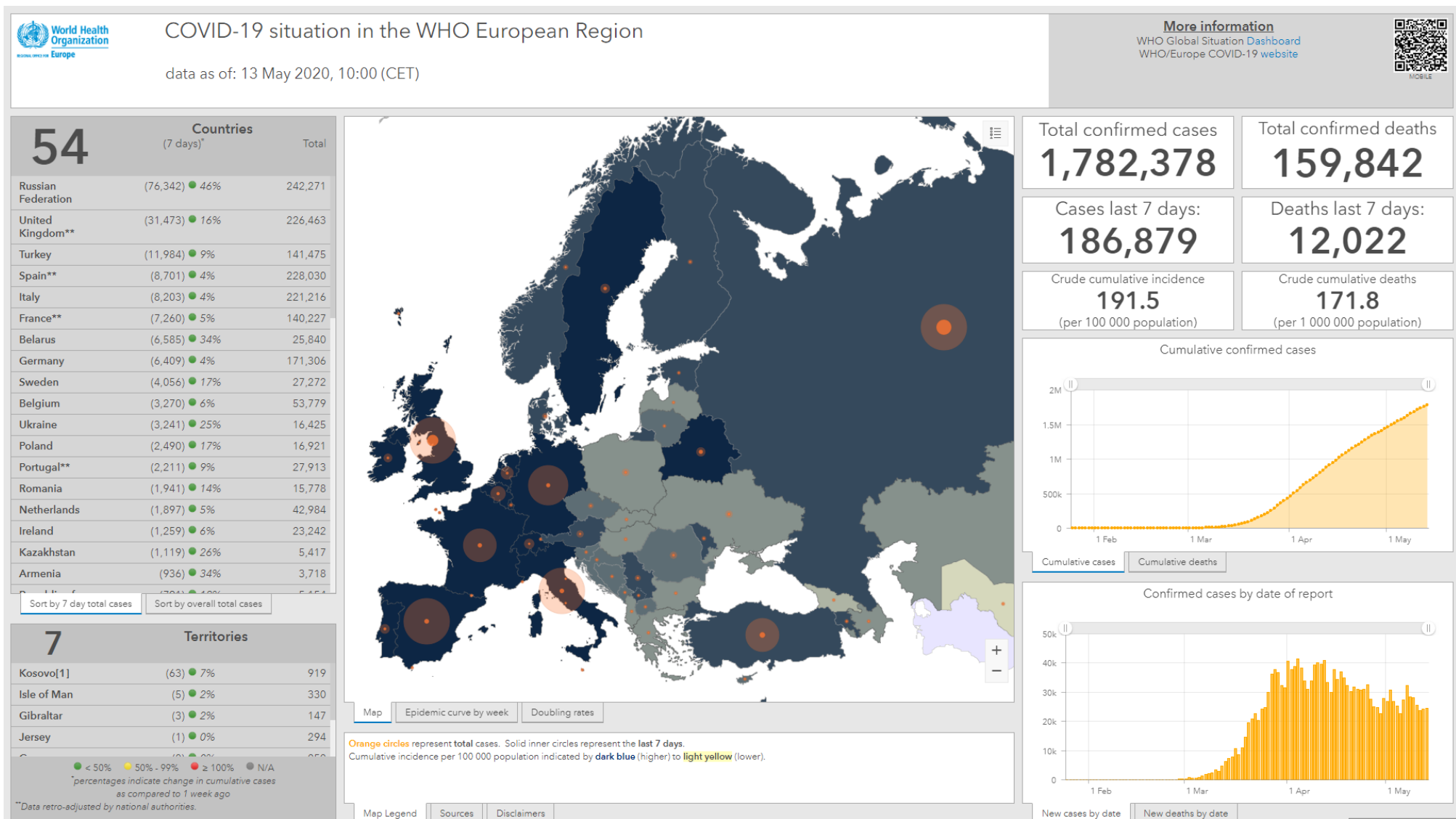
Countries and territories without cases reported



Date of production: 13/05/2020

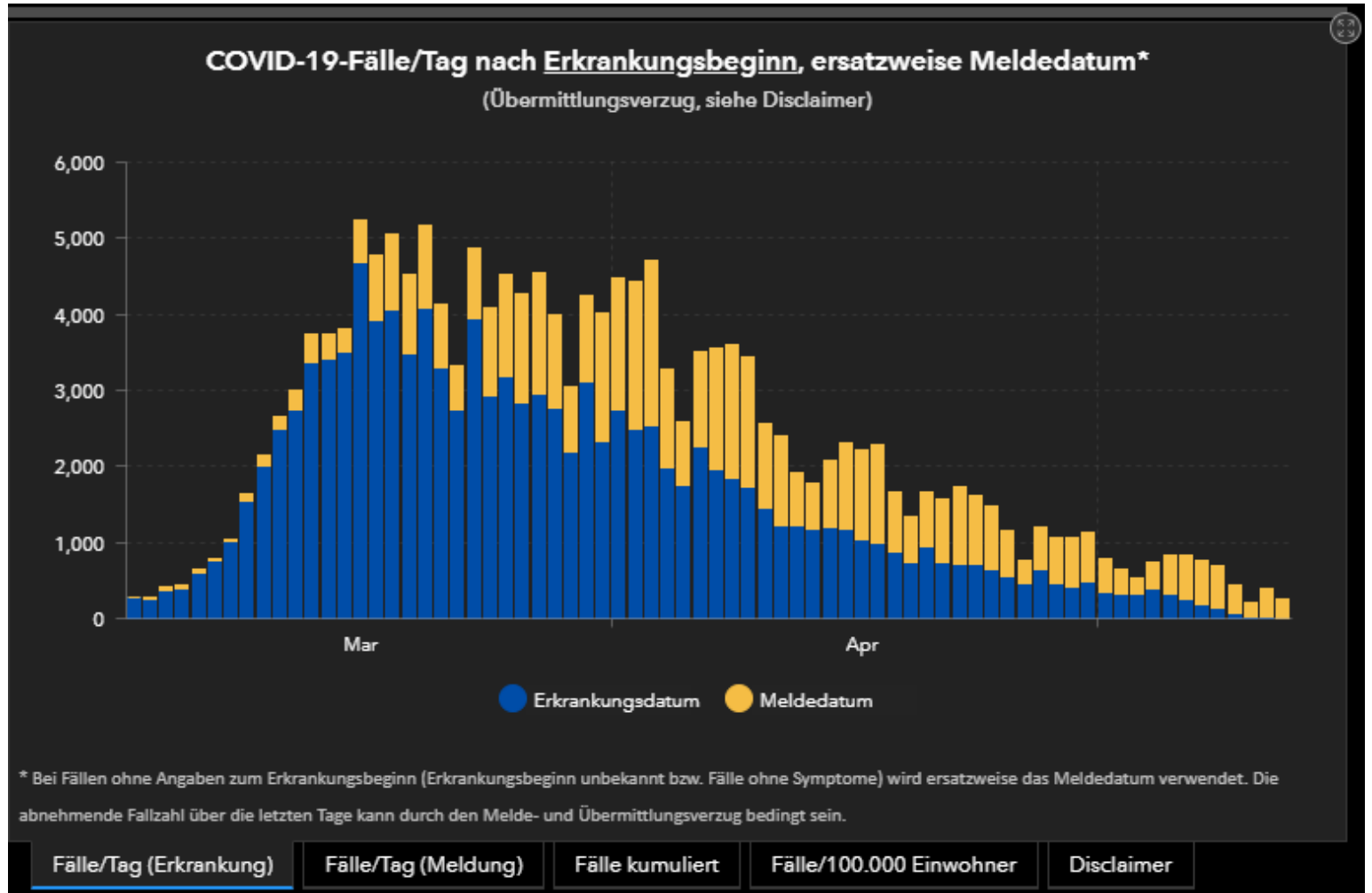
The boundaries and names shown on this map do not imply official endorsement or acceptance by the European Union.

COVID-19 – Regione Europea dell’OMS



Germania

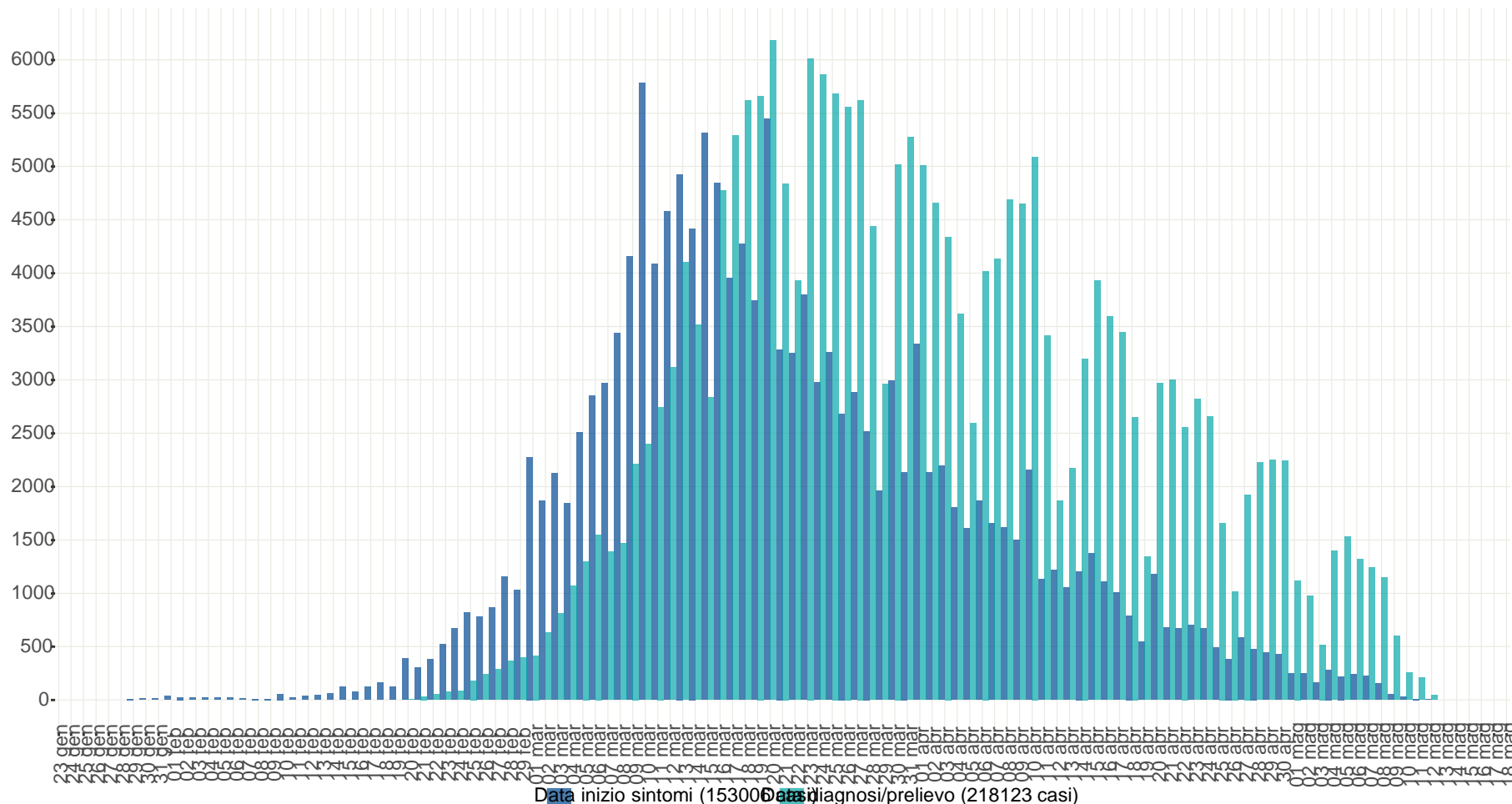
Casi totali: 171,306



COVID-19 – in Italia

221,133 casi confermati di COVID-19 riportati dai laboratori regionali di riferimento

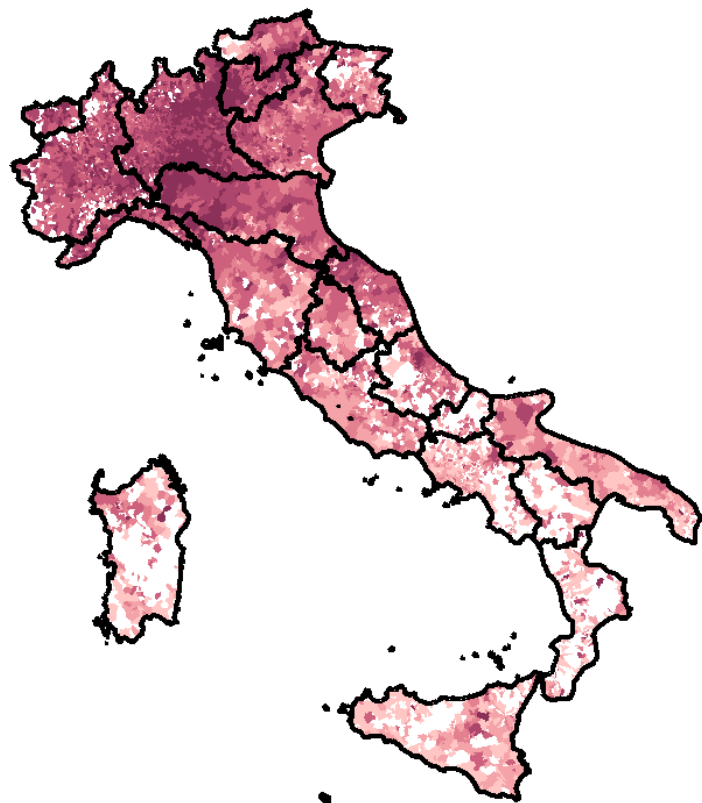
- 29,525 decessi
- 25,446 operatori sanitari
- Etá mediana 62



Aumento rispetto al 6 maggio: 4%



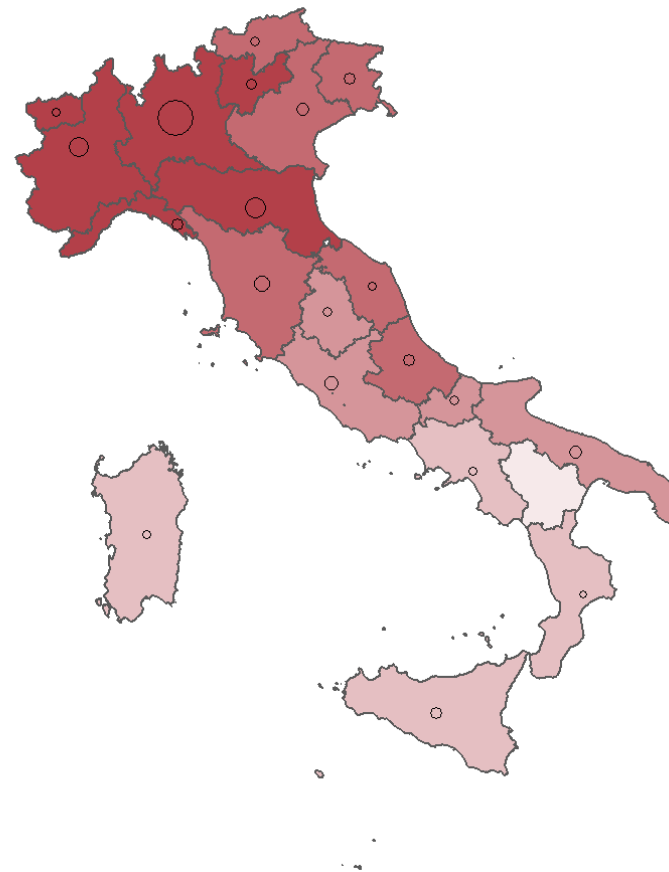
Incidenza cumulativa (per 100,000 abitanti) dei casi di COVID-19, per comune di residenza/domicilio (quando nella stessa Regione/PPAA di diagnosi)



Incidenza per 100000



Incidenza (per 100,000 abitanti) dei casi di COVID-19 e numero di casi **con data inizio sintomi negli ultimi 14 giorni**, per Regione/PPAA di diagnosi



N. casi [inizio sintomi 14gg] (29/4-12/5) ○ 500 ○ 1000 ○ 1500

Incidenza per 100000

0.01-50	50.01-100	100.01-200	200.01-500	>500
---------	-----------	------------	------------	------

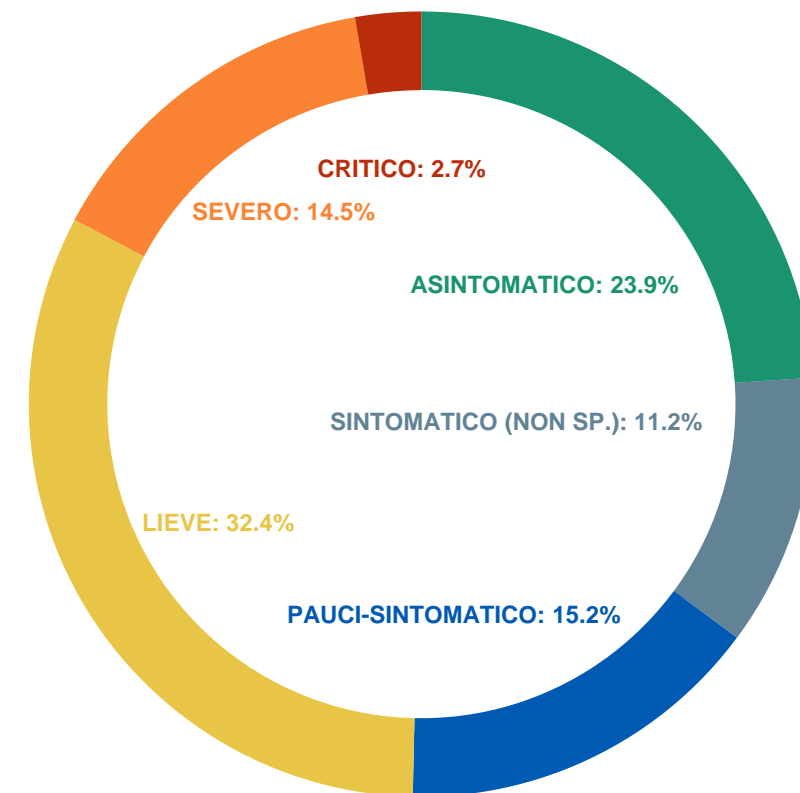
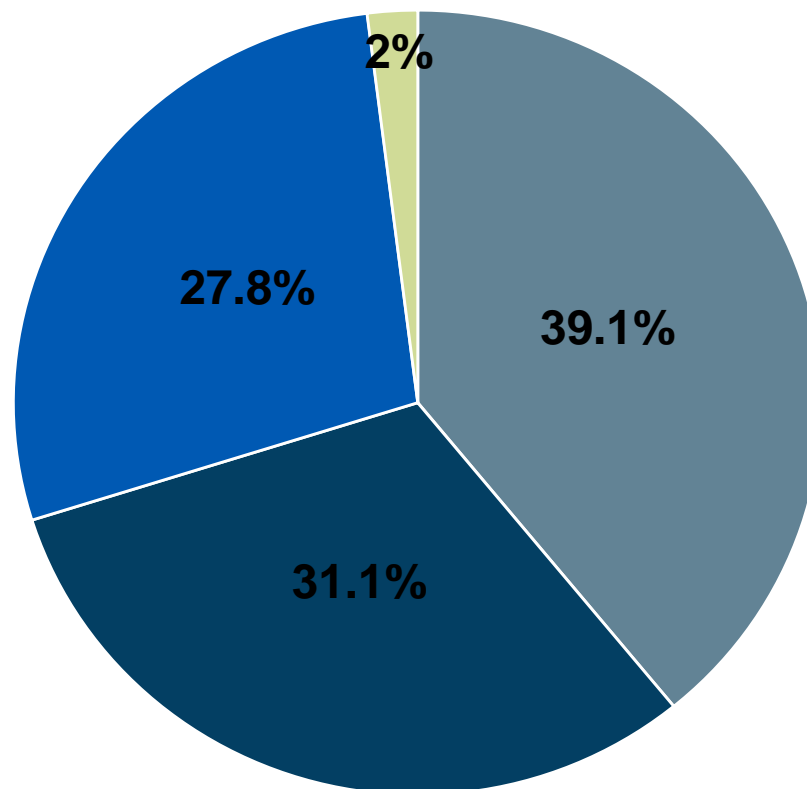
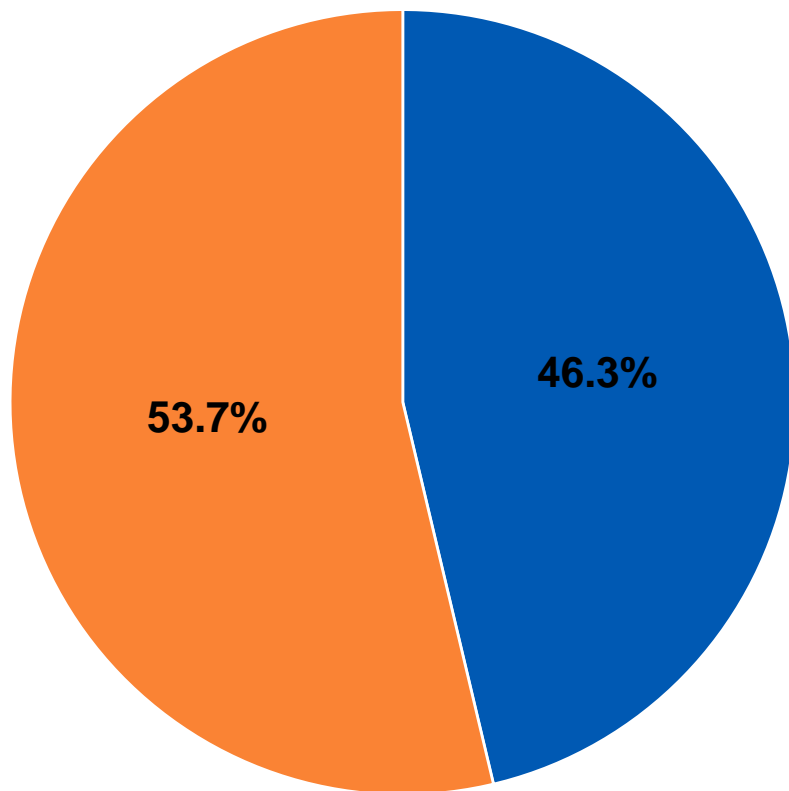
Fonte: sorveglianza integrata nazionale COVID-19
Dati al 13 maggio 2020



Caratteristiche dei casi di COVID-19 segnalati al sistema di sorveglianza integrata

Femmine Maschi

0-18 19-50 51-70 >70



Fonte: sorveglianza integrata nazionale COVID-19
Dati al 13 maggio 2020

La raccolta ed analisi dei dati di sorveglianza è realizzata dal Dipartimento Malattie Infettive– Istituto Superiore di Sanità

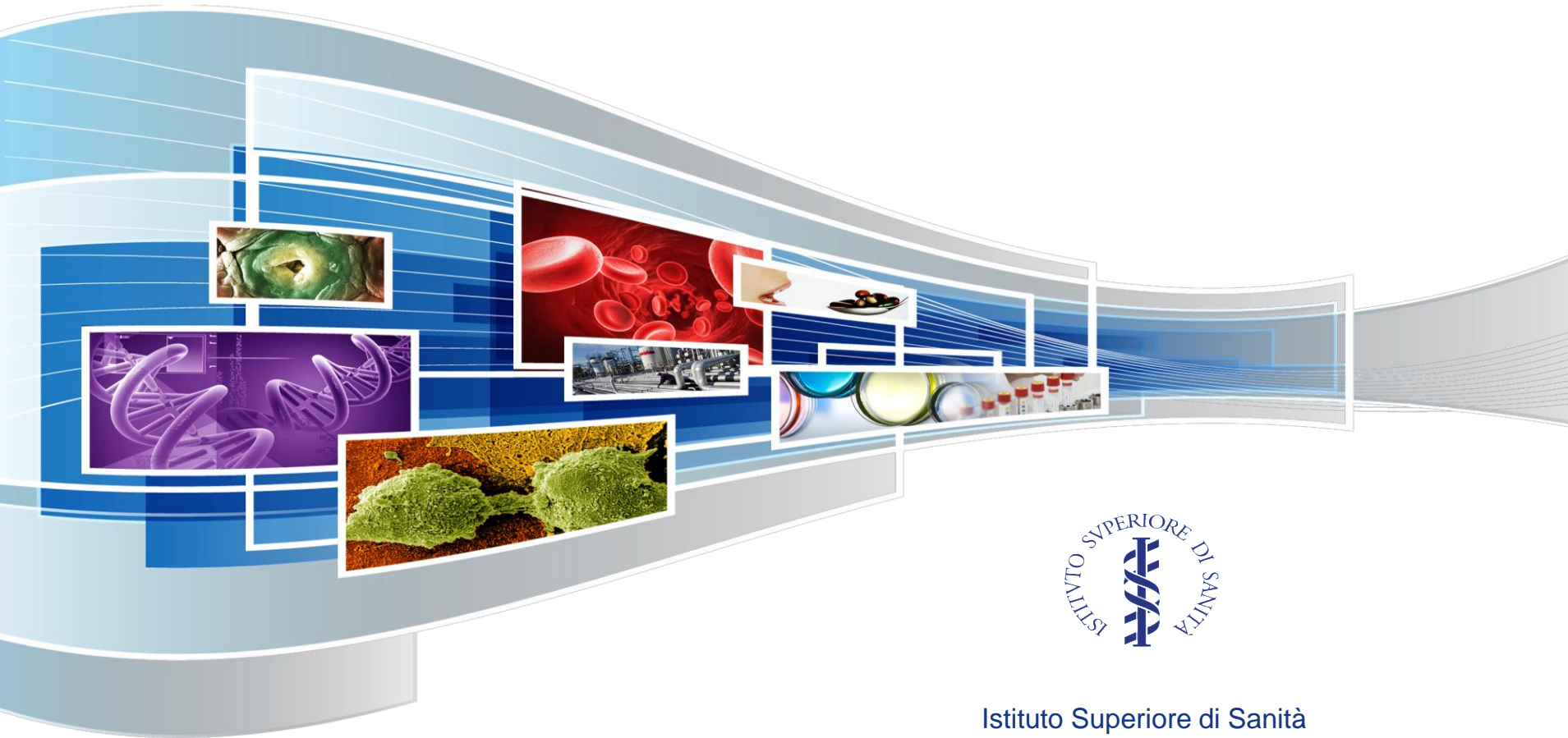


Letalità

- 29.525 decessi
- Letalità complessiva 13,4%
 - Età
 - Co-morbidity
 - Sesso maschile
- Aspetti da considerare
 - Tendenza a diagnosticare casi più gravi (con sotto-stima del denominatore) in particolare in aree con trasmissione sostenuta
 - Letalità confrontabile con quella cinese fino alla decade 60-69 aa (Onder, Rezza, Brusaferro, JAMA, 2020)
 - Struttura demografica diversa dalla Cina per soggetti >70aa
 - Alta letalità in contesti fragili

Fascia d'età (anni)	Deceduti [n (%)]	Letalita (%)
0-9	3 (0%)	0.2%
10-19	0 (0%)	0%
20-29	11 (0%)	0.1%
30-39	58 (0.2%)	0.3%
40-49	257 (0.9%)	0.9%
50-59	1051 (3.6%)	2.7%
60-69	3107 (10.5%)	10.4%
70-79	8196 (27.8%)	25.4%
80-89	12045 (40.8%)	30.7%
>90	4797 (16.2%)	27%
Non noto	0 (0%)	0%
Totale	29525 (100%)	13.4%

Grazie



Istituto Superiore di Sanità