

Meeting NUOVO CORONAVIRUS COVID-19 ISS Aula Pocchiarì, mercoledì 8 aprile ore 14:00

COVID-19

Aggiornamento Epidemiologico



Gianni Rezza e TASK FORCE DMI COVID-19

Istituto Superiore di Sanità, Italy

COVID-19 – Situazione Globale



Search by Country, Territory, or Area



Covid-19 Response Fund

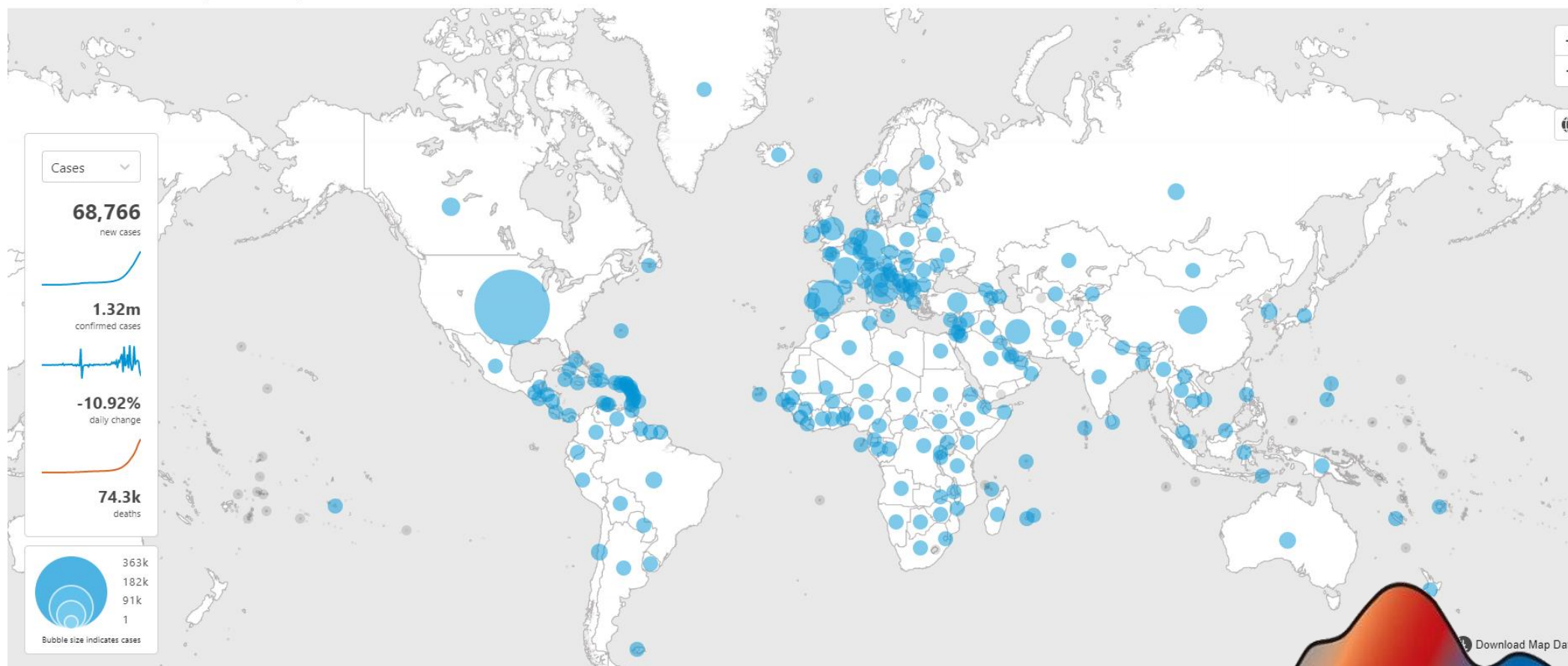
Donate

Coronavirus (COVID-19)

Last updated: 2020/4/8, 12:00pm CEST

Overview

Explorer

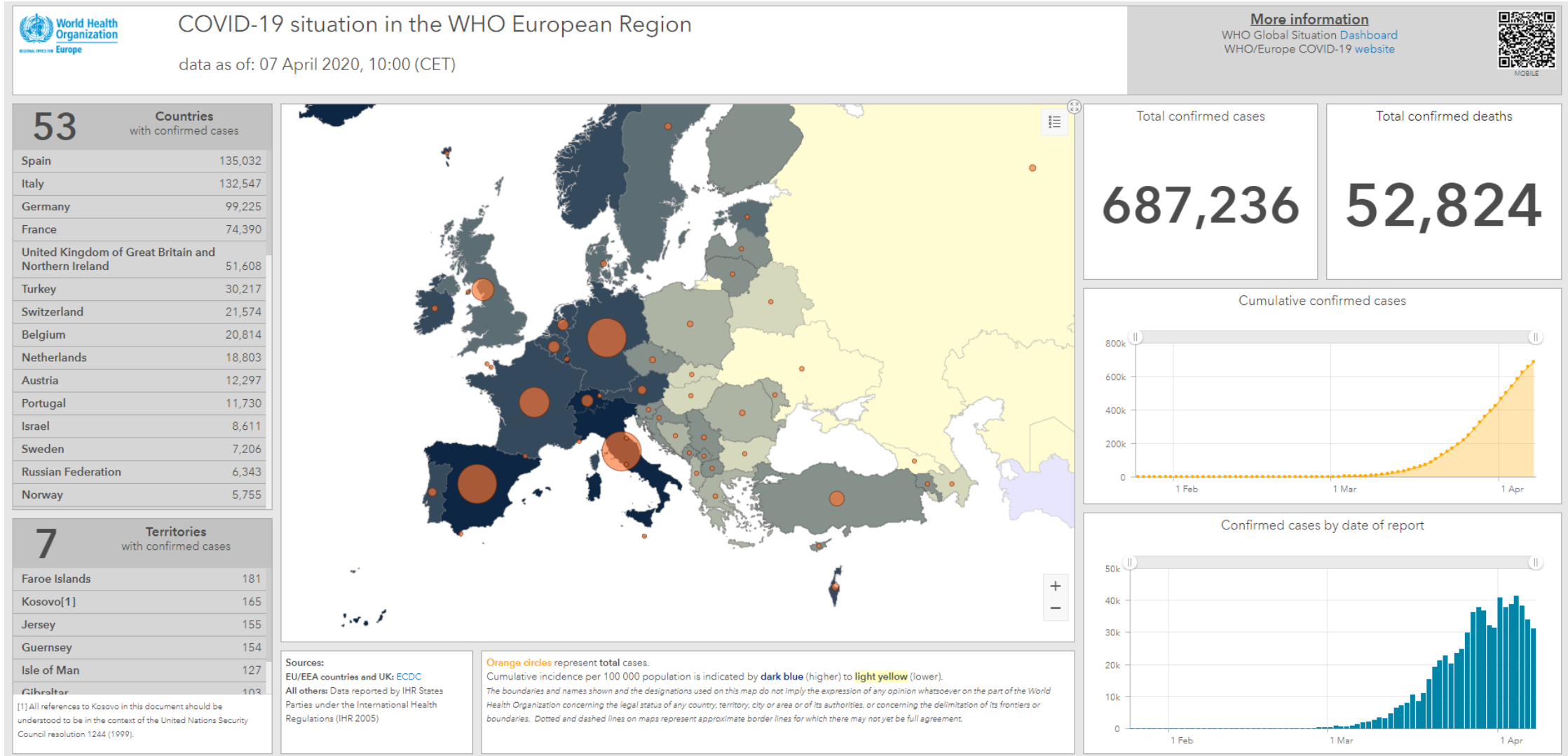


Pandemia dichiarata l'11 marzo 2020

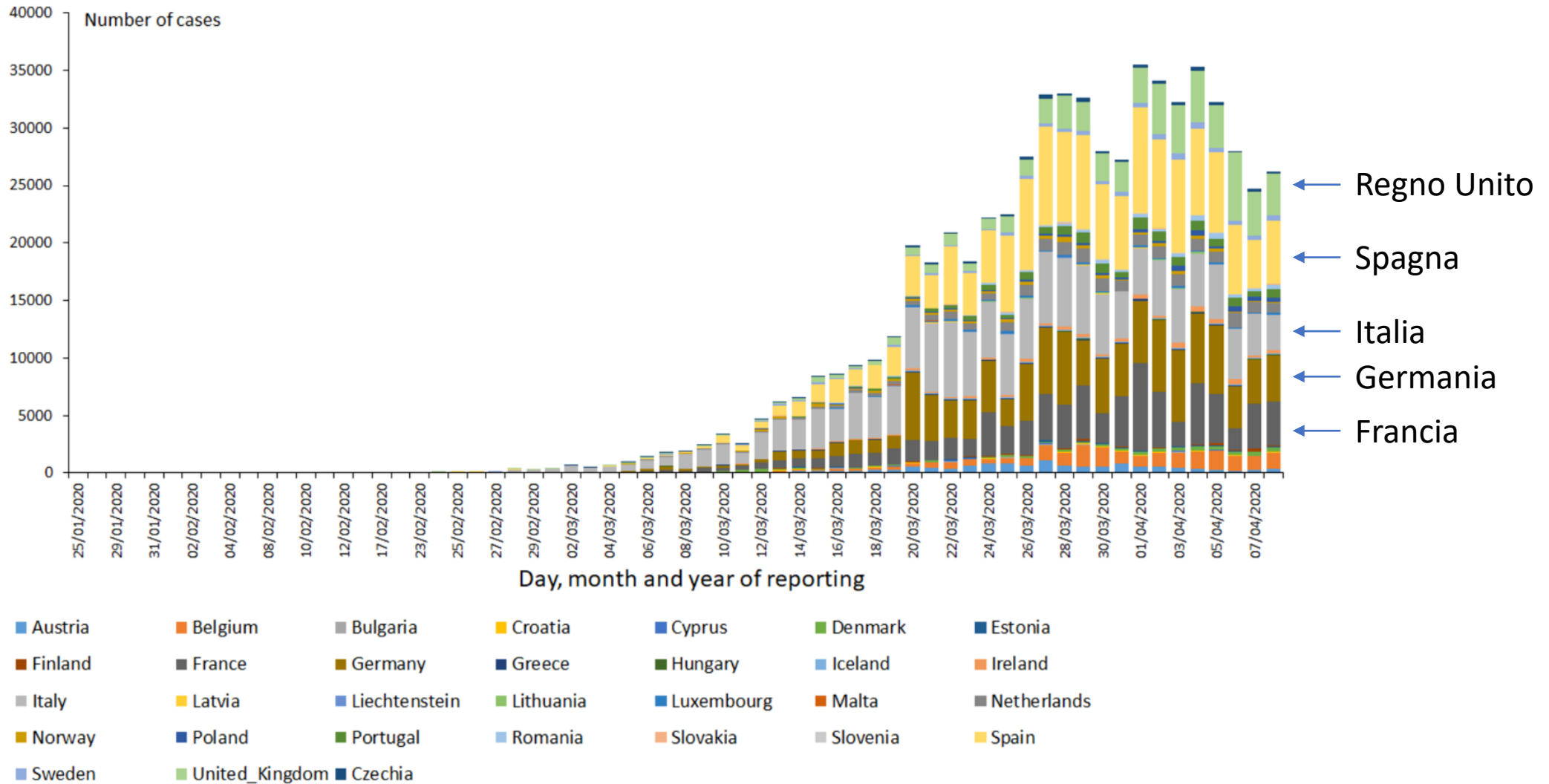
Aumento rapido del numero di casi notificati con interessamento di 195 paesi/territori



COVID-19 – Regione Europea dell’OMS



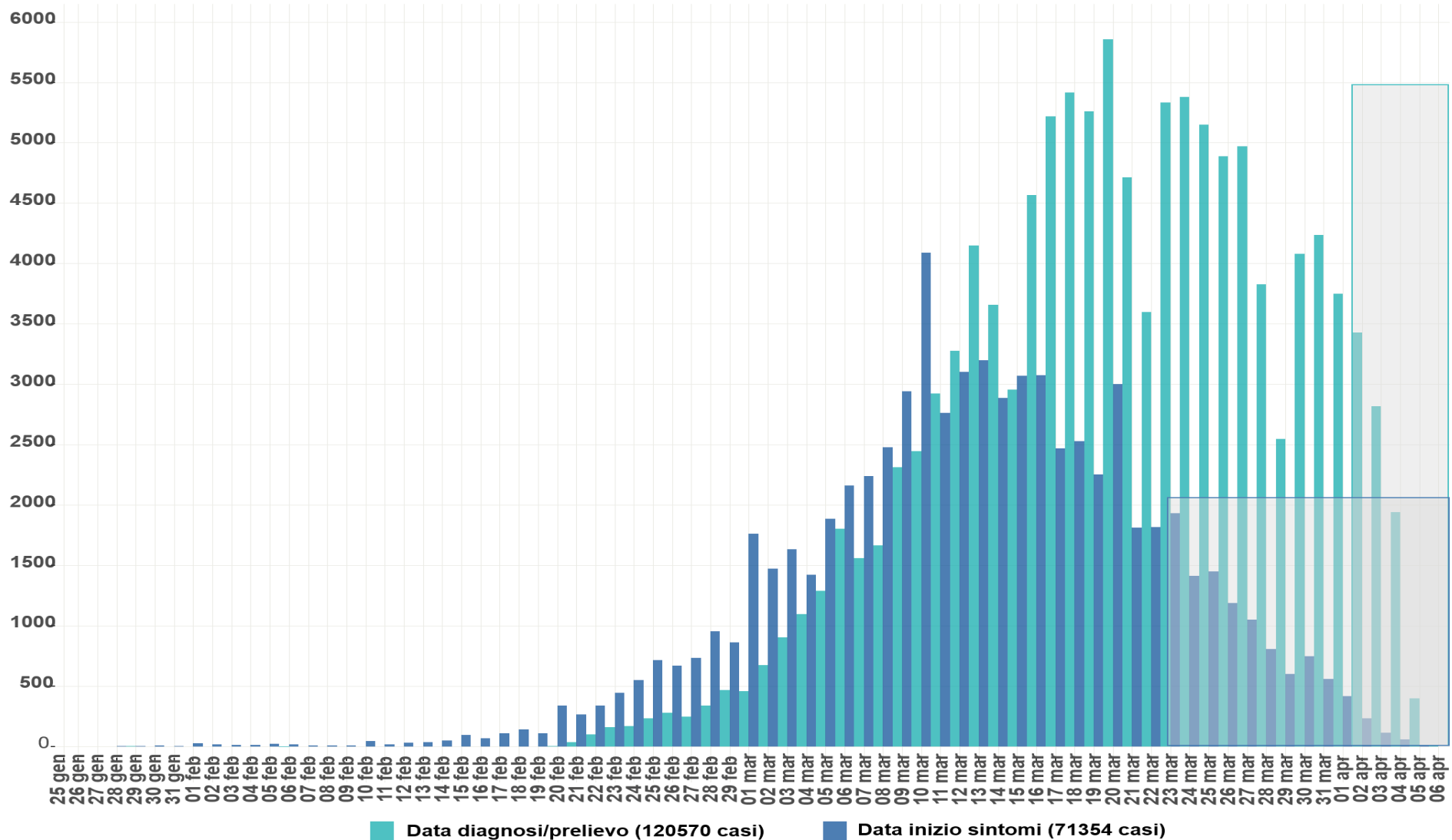
COVID-19 – Unione Europea, SEE e UK



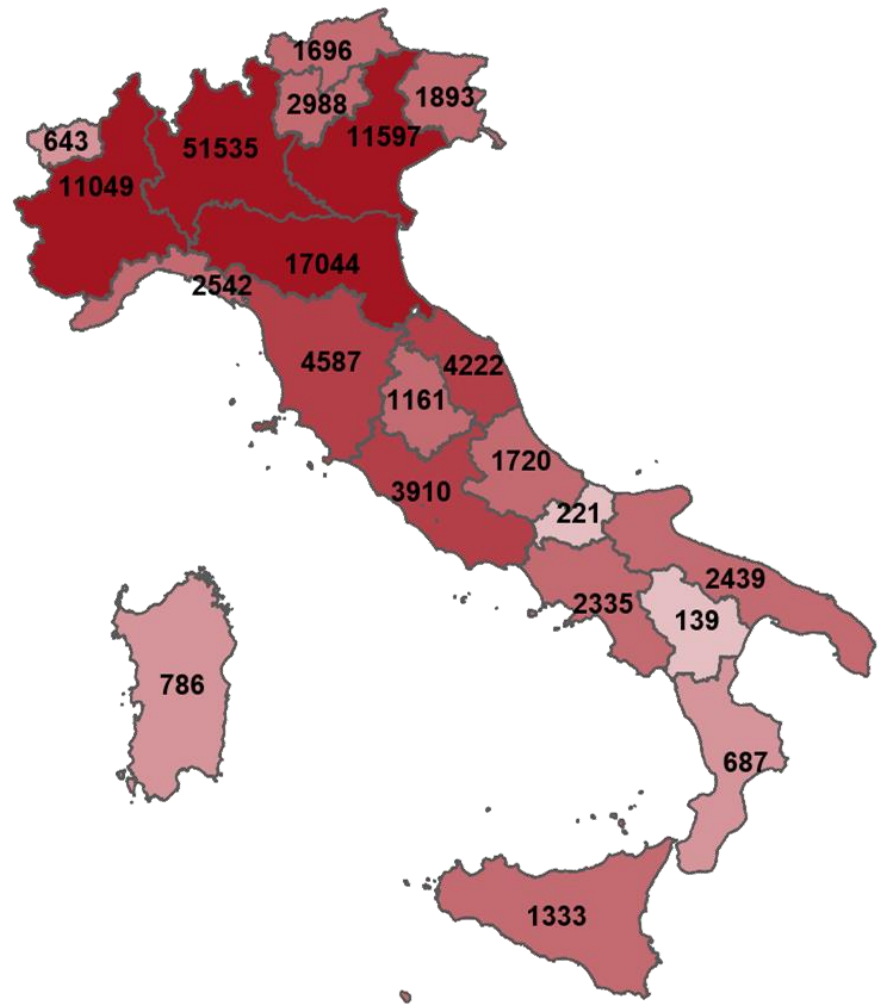
Dati al 6 aprile 2020

COVID-19 – in Italia

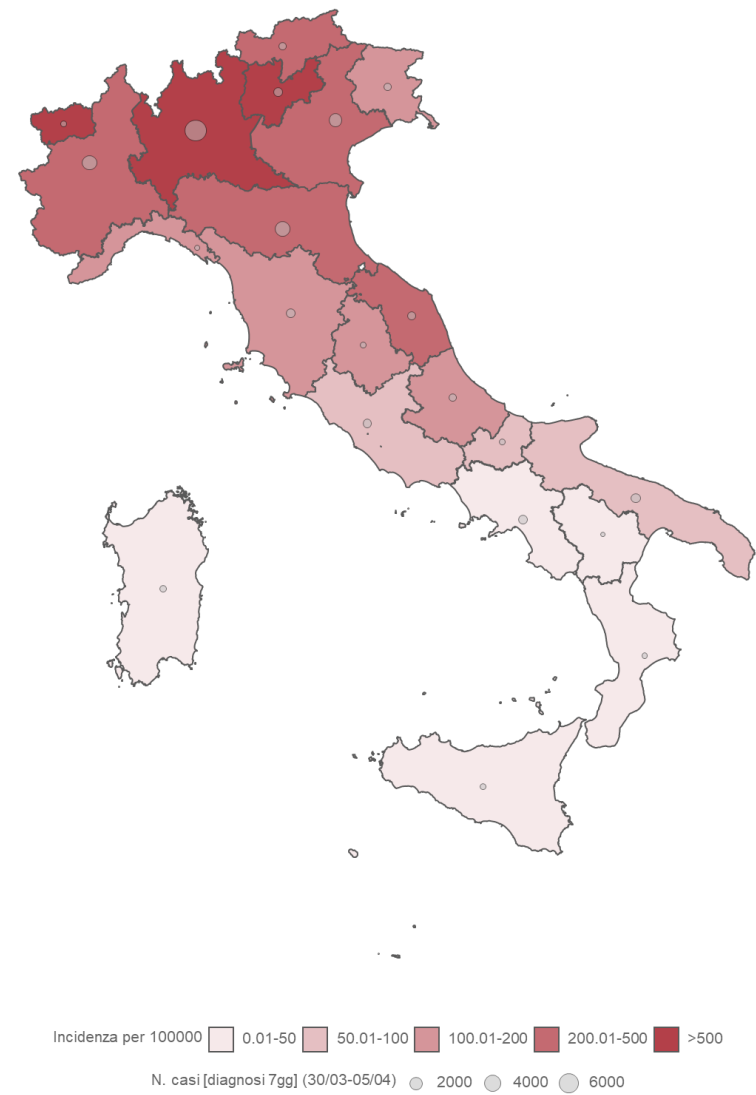
124.527 casi confermati di COVID-19 riportati dai laboratori regionali di riferimento



Numero totale di casi di COVID-19, per Regione/PPAA di diagnosi

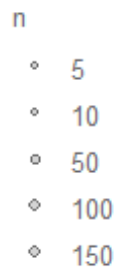
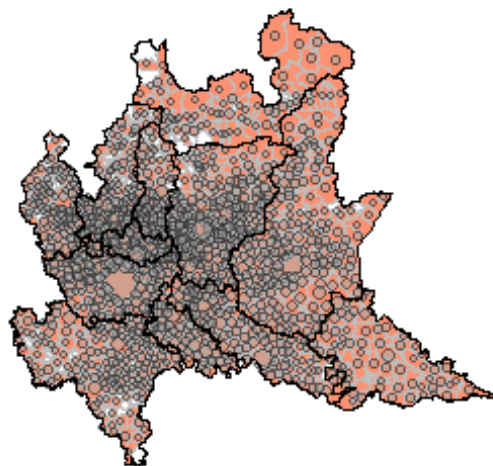


Incidenza (per 100.000 abitanti) dei casi di COVID-19 e numero di casi diagnosticati negli ultimi 7 giorni, per Regione/PPAA di diagnosi

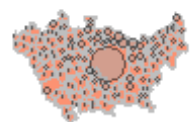




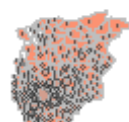
Lombardia



Informazione disponibile per: 50448 casi.



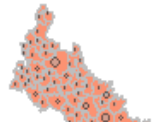
Milano (11550)



Bergamo (9827)



Brescia (9475)



Lodi (2284)

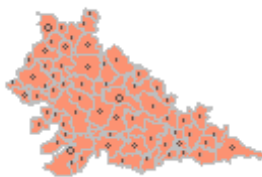
n



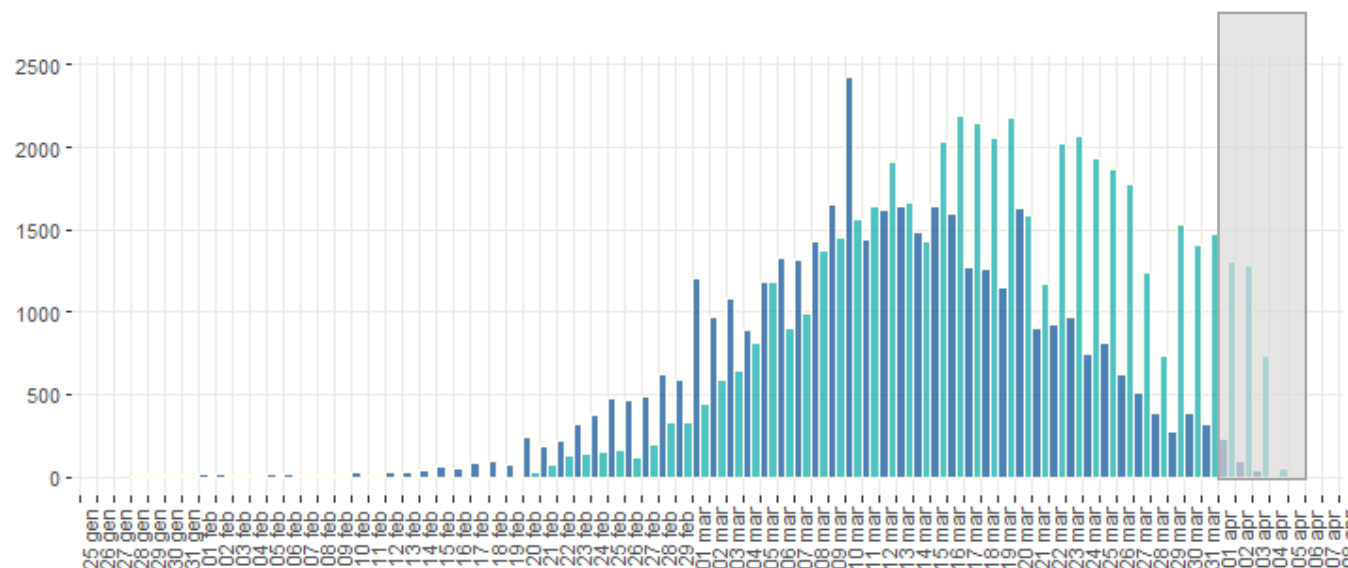
Pavia (2703)



Cremona (4258)



Mantova (2087)



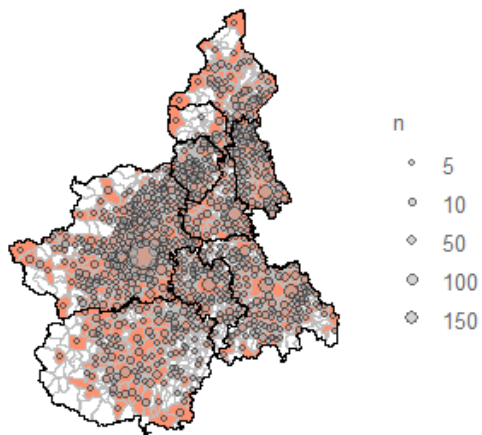
Lombardia ■ Data diagnosi/prelievo ■ Data inizio sintomi

Dati al 6 aprile:

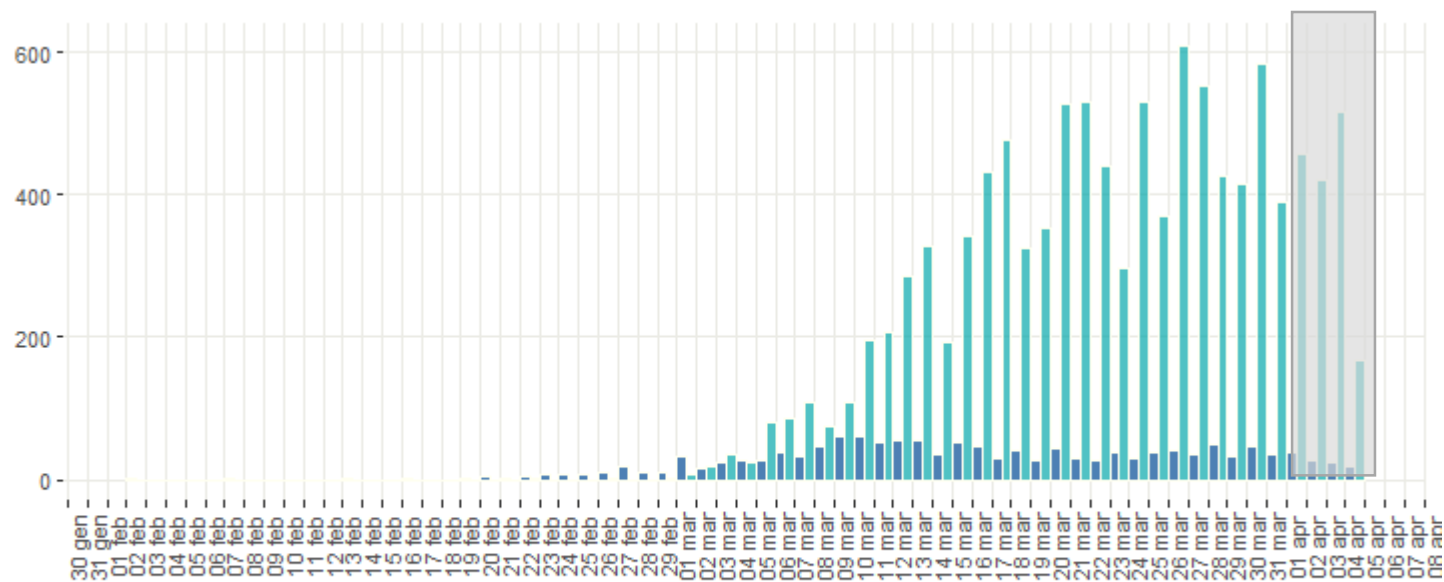
- 51.535 casi confermati di COVID-19
- Età mediana 64 anni (0-100)
- 8.915 decessi



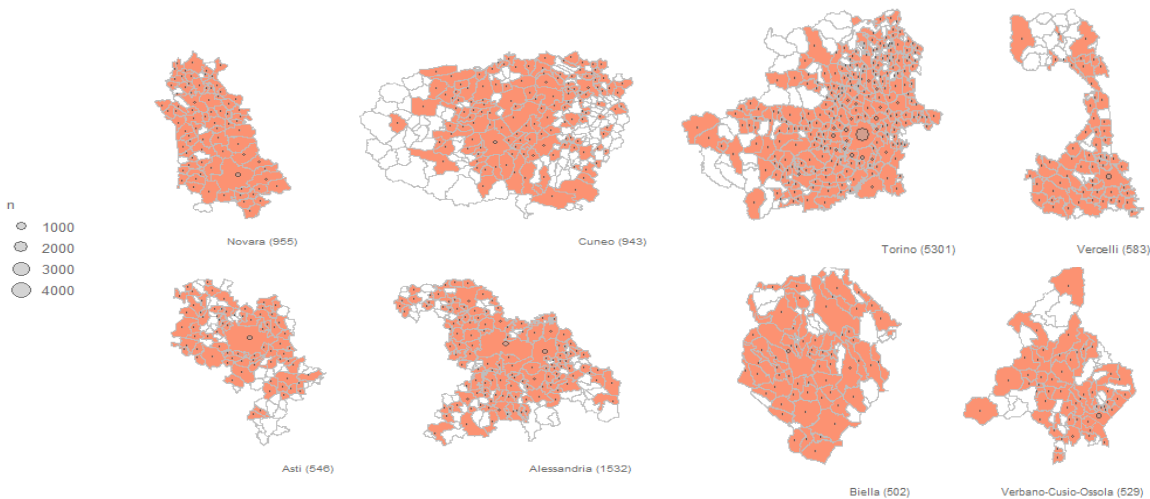
Piemonte



Informazione disponibile per: 10891 casi.



Piemonte ■ Data diagnosi/prelievo ■ Data inizio sintomi

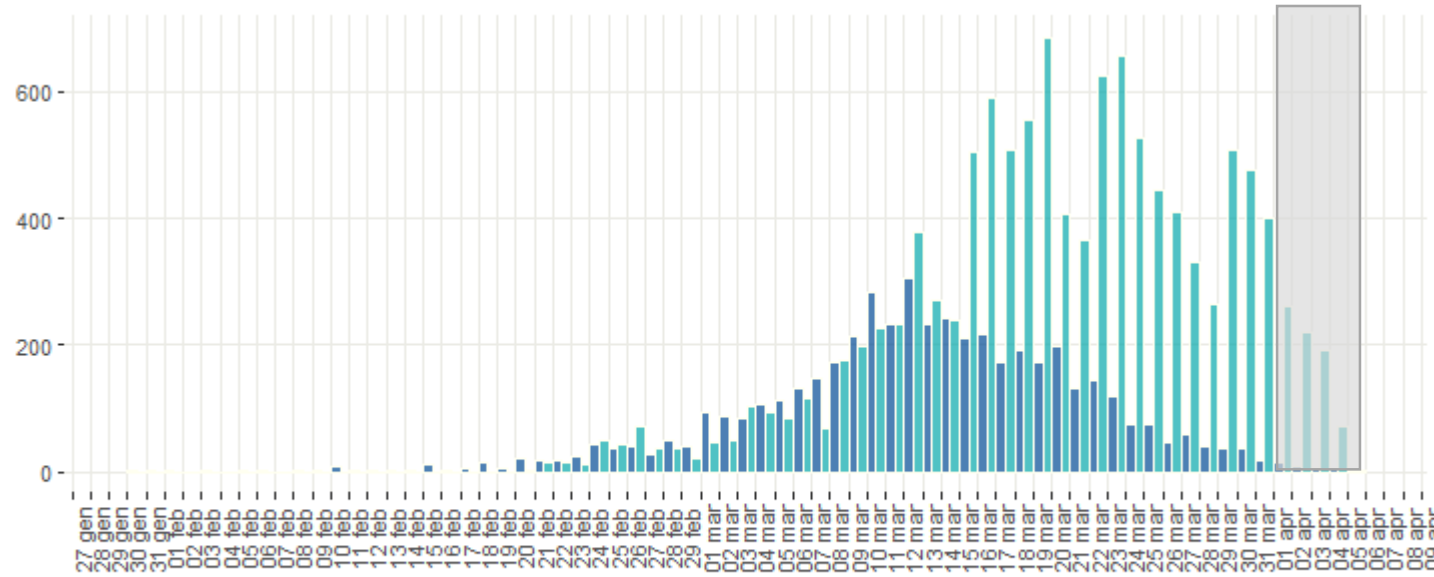
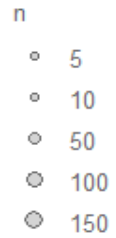
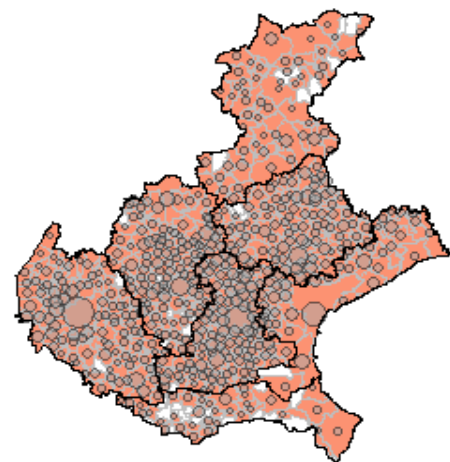


Dati al 6 aprile:

- 11.049 casi confermati di COVID-19
- Età mediana 63 anni (0-100)
- 961 decessi (dato in consolidamento)



Veneto



Veneto ■ Data diagnosi/prelievo ■ Data inizio sintomi

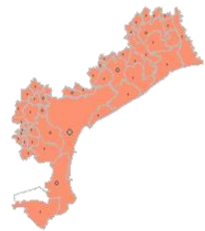
Informazione disponibile per: 11294 casi.



Belluno (553)



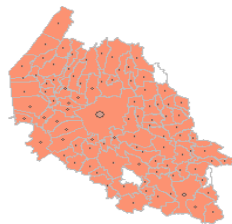
Treviso (1726)



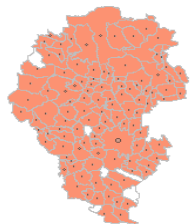
Venezia (1488)



Padova (2871)



Verona (2748)



Vicenza (1702)



Rovigo (206)

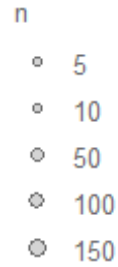
Dati al 6 aprile:

- 11.597 casi confermati di COVID-19
- Età mediana 58 anni (0-100)
- 668 decessi

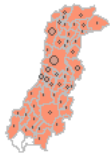




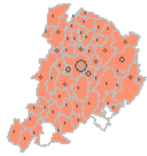
Emilia-Romagna



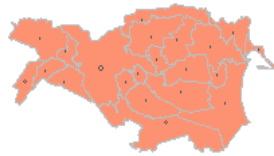
Informazione disponibile per: 16704 casi.



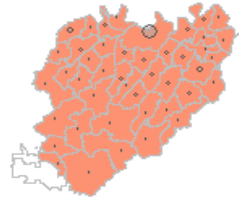
Modena (2540)



Bologna (2520)



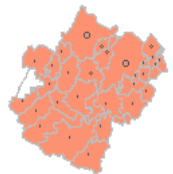
Ferrara (484)



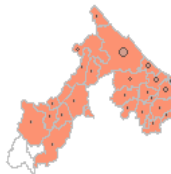
Piacenza (2771)



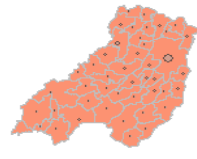
Ravenna (686)



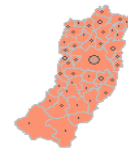
Forlì-Cesena (970)



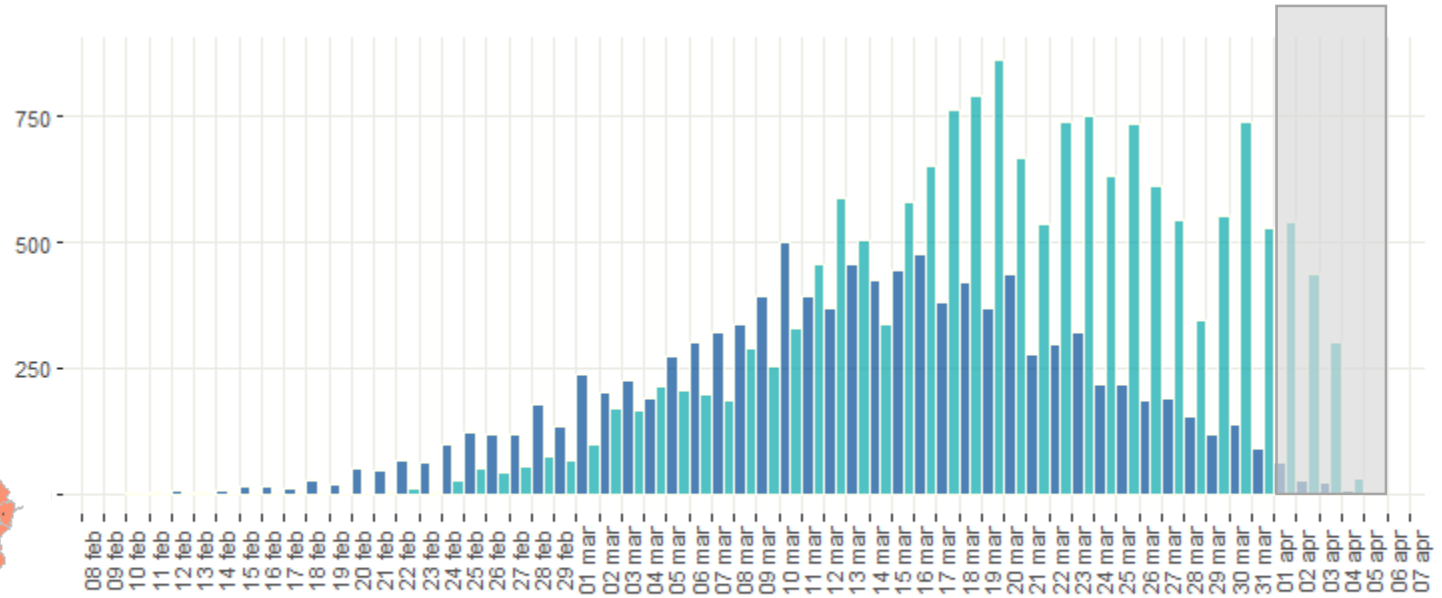
Rimini (1503)



Parma (2253)



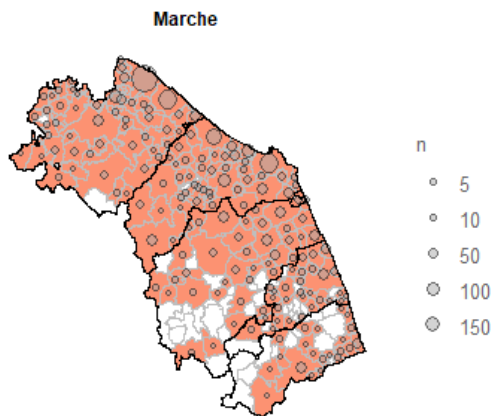
Reggio nell'Emilia (2977)



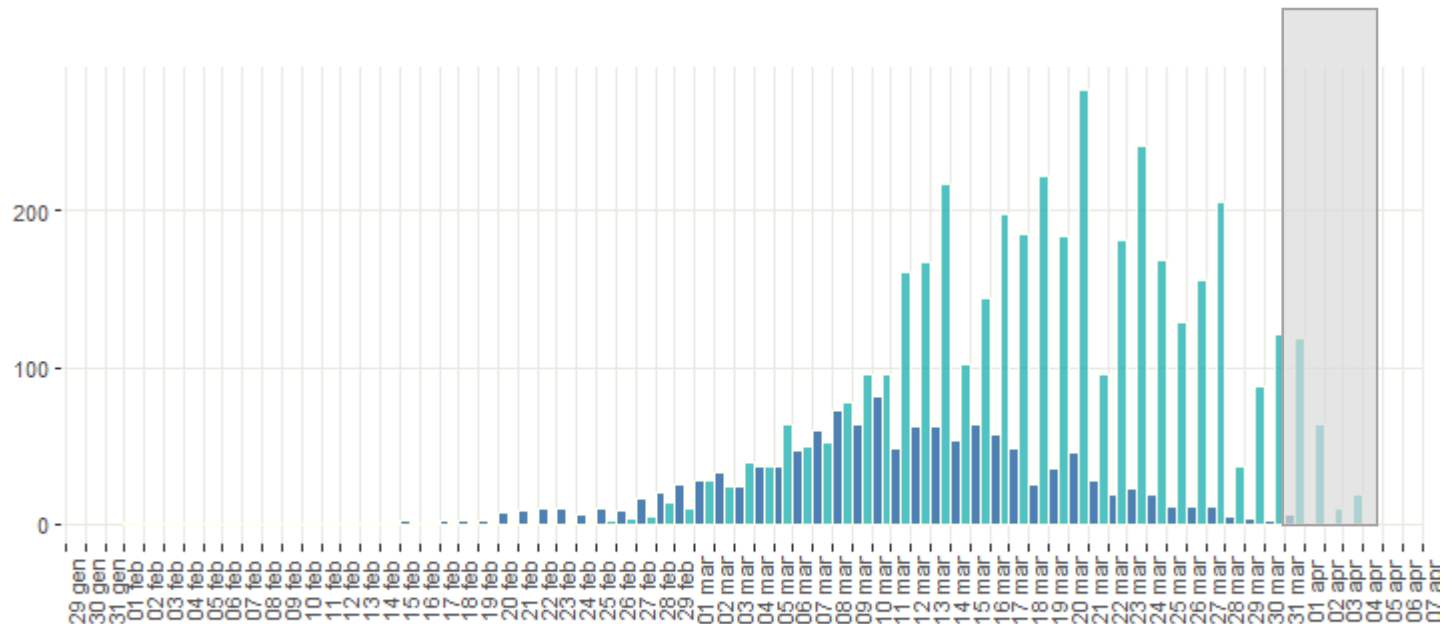
Emilia-Romagna ■ Data diagnosi/prelievo ■ Data inizio sintomi

Dati al 6 aprile:

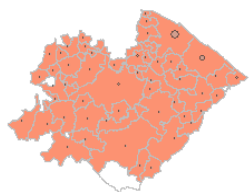
- 17.044 casi confermati di COVID-19
- Età mediana 62 anni (0-100)
- 2.038 decessi



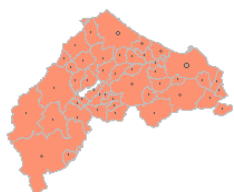
Informazione disponibile per: 3788 casi.



Marche ■ Data diagnosi/prelievo ■ Data inizio sintomi



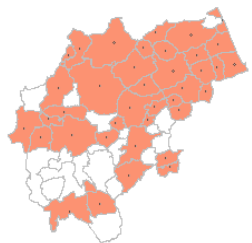
Pesaro e Urbino (1652)



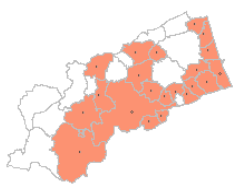
Ancona (1178)

n

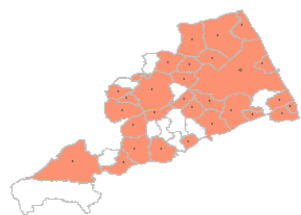
- 1000
- 2000
- 3000
- 4000



Macerata (555)



Ascoli Piceno (168)



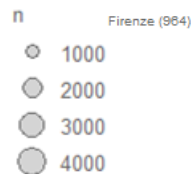
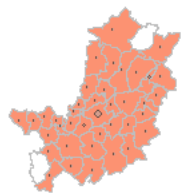
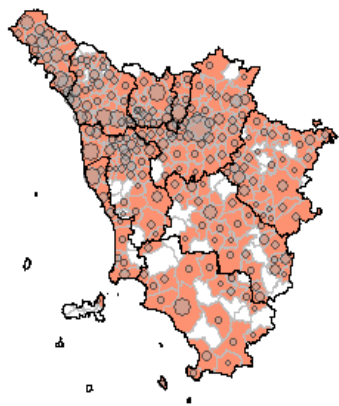
Fermo (235)

Dati al 6 aprile:

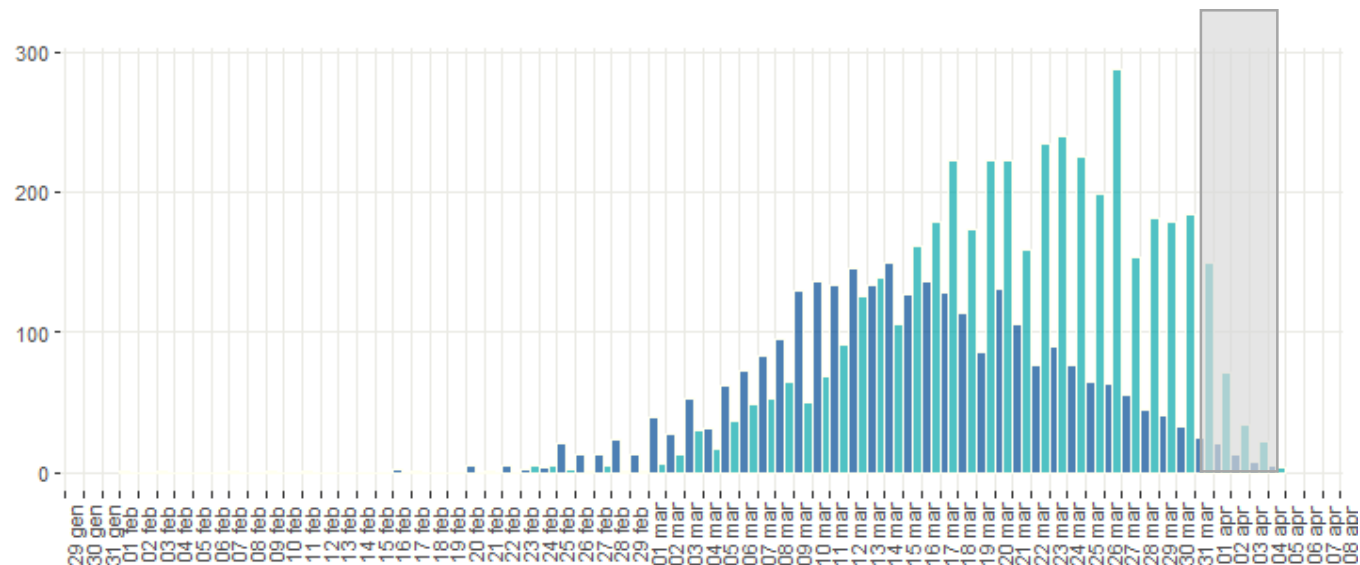
- 4.222 casi confermati di COVID-19
- Età mediana 63 anni (0-100)



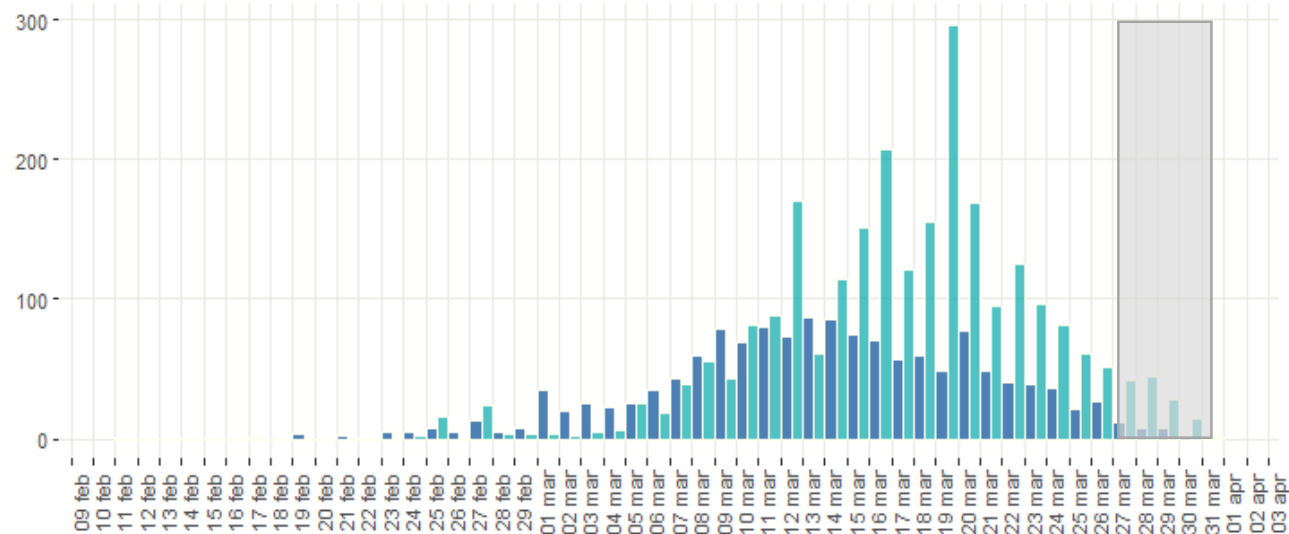
Toscana



Informazione disponibile per: 4528 casi.

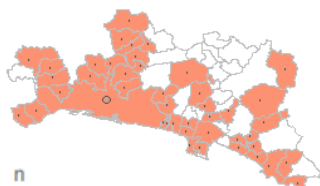
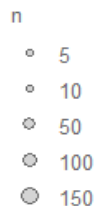
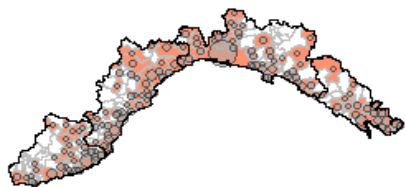


Toscana ■ Data diagnosi/prelievo ■ Data inizio sintomi



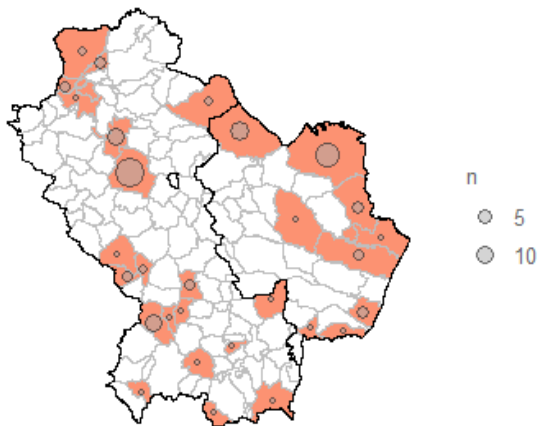
Liguria ■ Data diagnosi/prelievo ■ Data inizio sintomi

Liguria

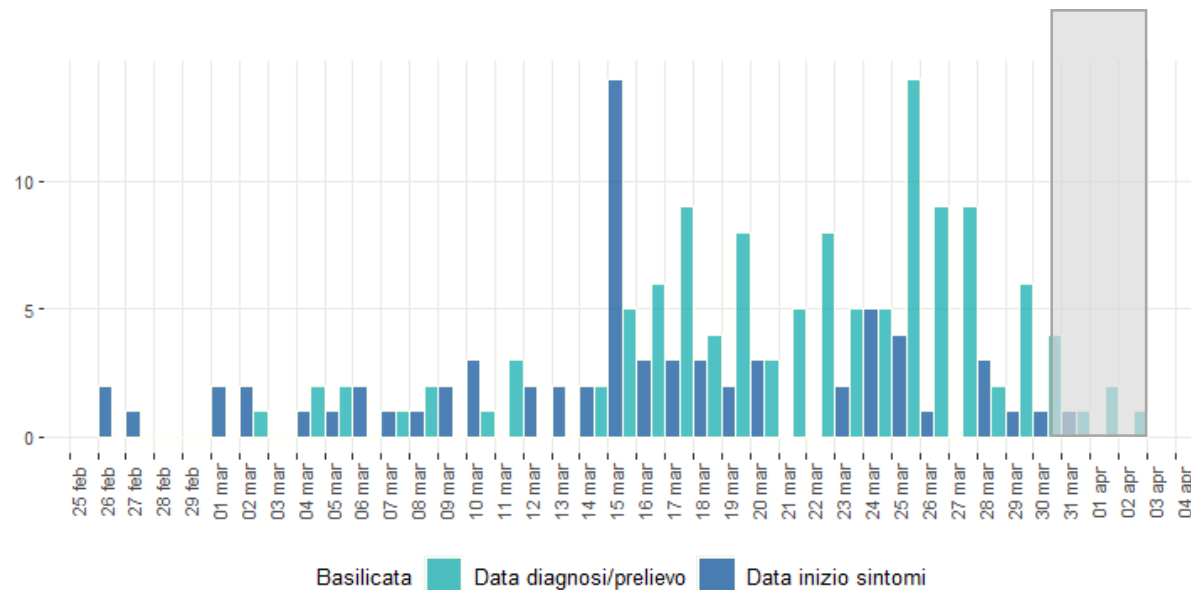


Informazione disponibile per: 1561 casi.

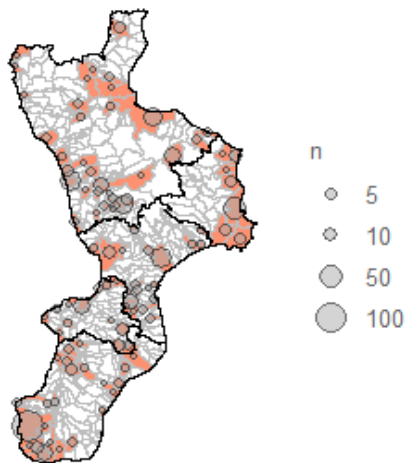
Basilicata



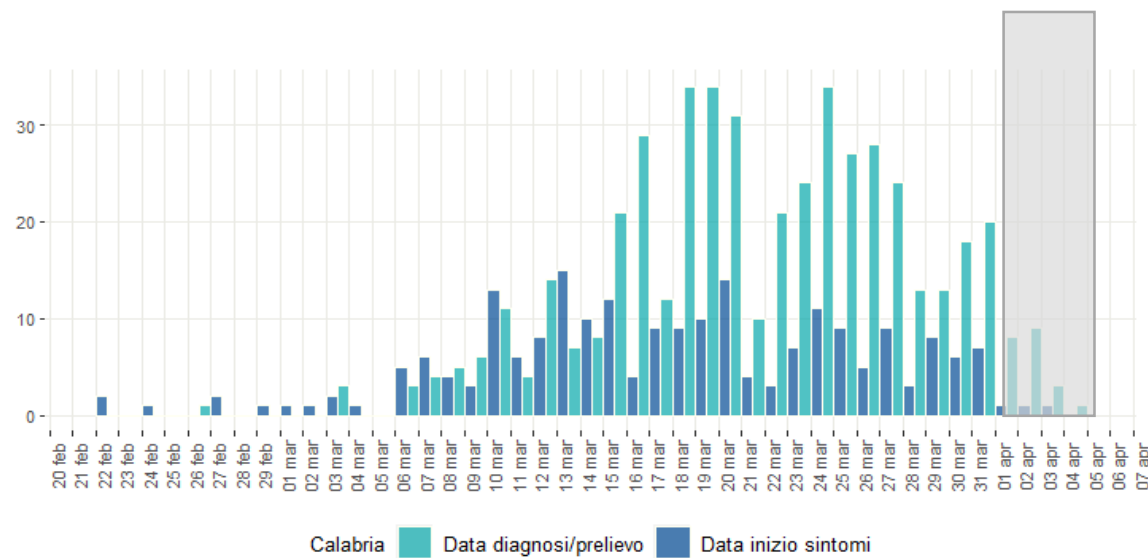
Informazione disponibile per: 125 casi.



Calabria



Informazione disponibile per: 634 casi.

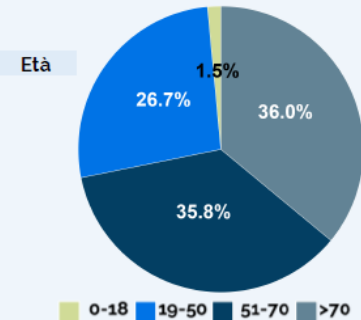


Caratteristiche dei casi segnalati al Sistema di sorveglianza integrata

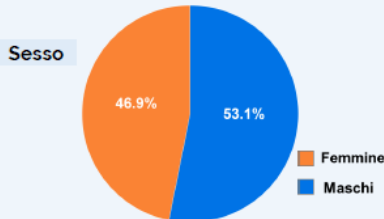
124.527 casi di COVID-19* di cui:

12.681 operatori sanitari[§]

14.860 deceduti



Età mediana dei casi: **62 anni**



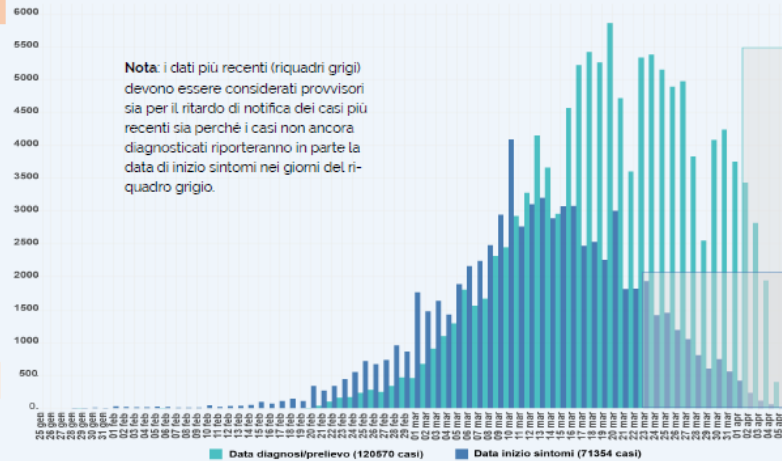
Fascia d'età (anni)	Deceduti in (%)	Letalità (%)
0-9	1 (0%)	0.1%
10-19	0 (0%)	0%
20-29	7 (0%)	0.1%
30-39	34 (0.2%)	0.4%
40-49	136 (0.9%)	0.8%
50-59	567 (3.8%)	2.3%
60-69	1724 (11.6%)	8.4%
70-79	4909 (33%)	22.7%
80-89	5956 (40.1%)	30.6%
>=90	1525 (10.3%)	26.8%
Non noto	1 (0%)	0.6%
Totale	14860 (100%)	11.9%

*Il flusso ISS raccoglie dati individuali di casi con test positivo per SARS-COV-2 diagnosticati dalle Regioni/PPAA. I dati possono differire dai dati forniti dal Ministero della Salute e dalla Protezione Civile che raccolgono dati aggregati. § Dato non riferito al luogo di esposizione ma alla professione.

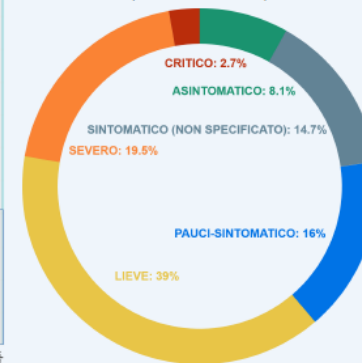
Sorveglianza Integrata COVID-19 in Italia

(Ordinanza n. 640 del 27/02/2020)

AGGIORNAMENTO 6 aprile 2020

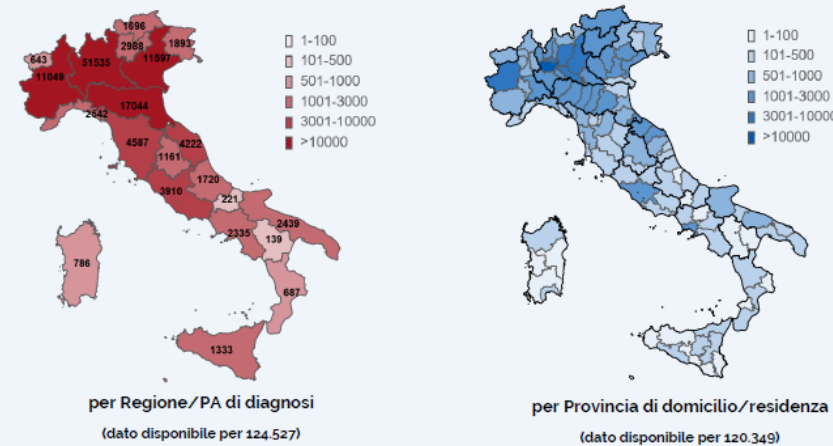


Sono risultati positivi il **99%** dei campioni processati dal Laboratorio nazionale di riferimento presso l'Istituto Superiore di Sanità



Dato disponibile per 48.129 casi

Numero totale di casi di COVID-19 diagnosticati dai laboratori regionali di riferimento



*La definizione internazionale di caso prevede che venga considerata caso confermato una persona con una conferma di laboratorio del virus che causa COVID-19 a prescindere dai segni e sintomi clinici

<https://www.ecdc.europa.eu/en/case-definition-and-european-surveillance-human-infection-novel-coronavirus-2019-ncov>

A cura di: Task force COVID-19 del Dipartimento Malattie Infettive e Servizio di Informatica Istituto Superiore di Sanità

<https://www.epicentro.iss.it/#itoss>

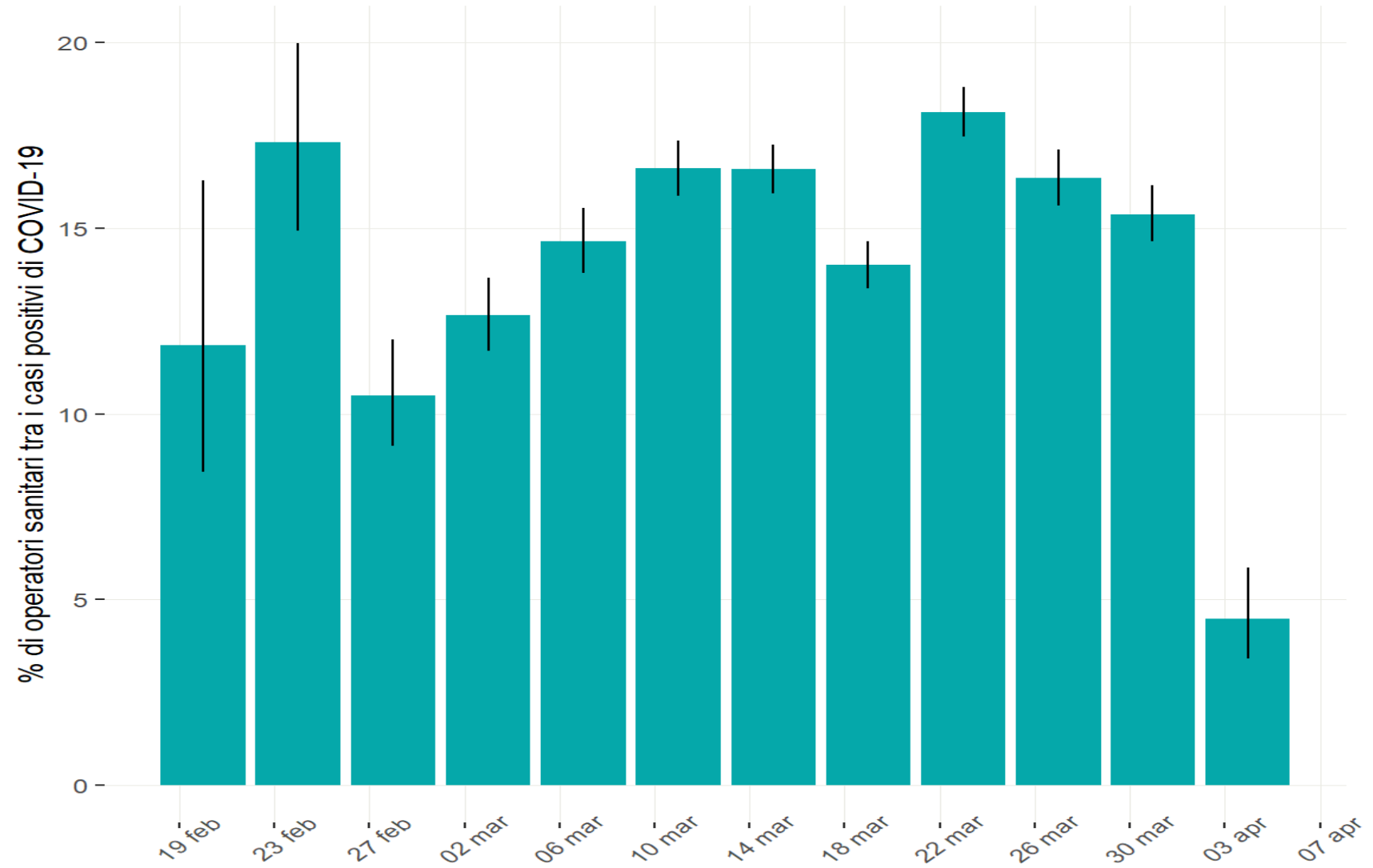


Operatori Sanitari

12.681 casi confermati di COVID-19 in operatori sanitari

Al 6 aprile 2020

- Età mediana 48 anni
- 33% sesso maschile



Percentuale di operatori sanitari tra i casi positivi di COVID-19 (CI 95%)

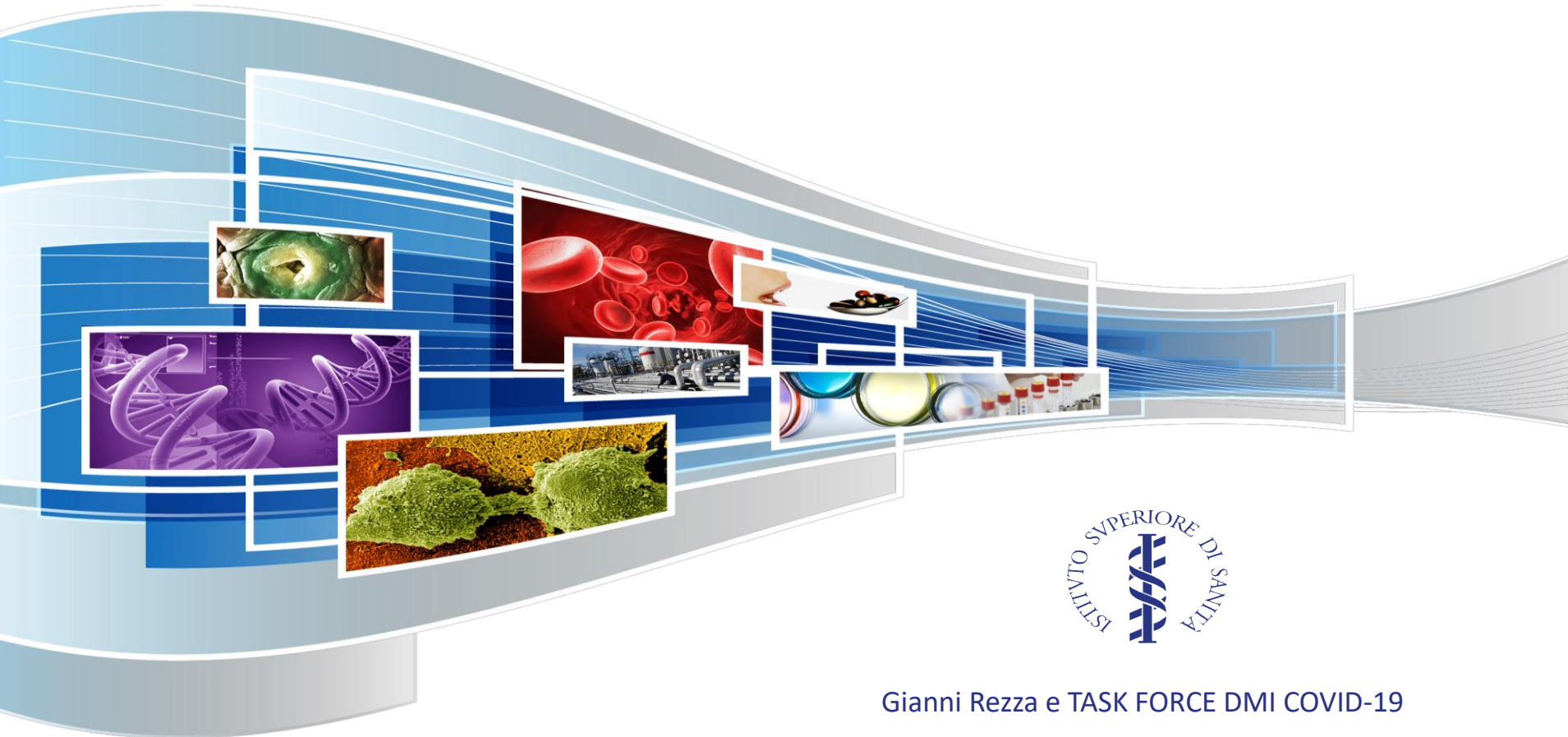
Letalità

Dati al 6 aprile 2020

- **14.860 decessi**
- Letalità complessiva 11.9%
 - Età
 - Co-morbidità
 - Sesso maschile
- **Aspetti da considerare**
 - Tendenza a diagnosticare casi più gravi (con sotto-stima del denominatore) in particolare in aree con trasmissione sostenuta
 - Letalità confrontabile con quella cinese fino alla decade 60-69 aa (Onder, Rezza, Brusaferro. JAMA, 2020)
 - Struttura demografica diversa dalla Cina per soggetti >70aa
 - Alta letalità in contesti fragili

Fascia d'età (anni)	Deceduti [n (%)]	Letalità (%)
0-9	1 (0%)	0.1%
10-19	0 (0%)	0%
20-29	7 (0%)	0.1%
30-39	34 (0.2%)	0.4%
40-49	136 (0.9%)	0.8%
50-59	567 (3.8%)	2.3%
60-69	1724 (11.6%)	8.4%
70-79	4909 (33%)	22.7%
80-89	5956 (40.1%)	30.6%
>=90	1525 (10.3%)	26.8%
Non noto	1 (0%)	0.6%
Totale	14860 (100%)	11.9%

Grazie



Gianni Rezza e TASK FORCE DMI COVID-19

Istituto Superiore di Sanità, Italy